



# Apparel & Novelties Collection 2024





## Collections 2024

Paddock Blue Collection	
Teamwear	4
Essential	17
Streetwear	23
Racing Collections	
MotoGP Replica Teamwear	31
Fabio Quartararo Collection	34
Monster Energy Yamaha Racing	36
WorldSBK Official Team Replica Collection	39
Jonathan Rea Collection	41
MX Collection	42
Sport Heritage Collection	49
Hyper Naked Collection	58
Ténéré Collection	62
Riding Gear	66
Gloves	85
Scooter Collection	91
Cycling Collection	97
REVS Collection	104
Racing Heritage Collection	113
Luggage	118
Baby Collection	125
Merchandise	128





## Paddock Blue Collection

Yamaha Motor has been racing 10 days after its creation in 1955, and never stopped since then. Racing is a part of our inspiration and core values and we want to share them with you. When you choose any article from our Racing line, which is worn by all our Official and Supported Teams, you become a member of our Yamaha Racing family.

## Paddock Blue Teamwear

Taking inspiration and styling from the latest Yamaha R7 race bikes, the iconic two-tone Yamaha blues take centre stage in the sleek Paddock Blue Teamwear Collection. A striking new range featuring sustainable fabric use throughout, t-shirts, jackets, headwear, riding gear and more are just some of the stunning new items offered that both adults and kids can enjoy. Try on the Paddock Blue Teamwear Collection and step into R World!

NEW



## Paddock Blue Men's Hybrid Jacket

**Part No.** B24-FJ122-E0 **XX**

**SIZE:** 1S-0S-0M-0L-1L-2L-3L

Multifunctional and perfect for changing weather, the Paddock Blue Men's Hybrid Jacket is a 2-in-1 item for day to day wear. 100% polyester throughout in two-tone blue, the puffer jacket body is padded inside and features removable softshell sleeves to transform the jacket into a bodywarmer. Printed Yamaha branding on the chest and back complete a classic Paddock Blue look.

- Removable sleeves through zippers to achieve a body warmer
- Printed Yamaha branding front and back
- Colour contrast dark blue sleeves
- 100% polyester pearl padding in body
- 100% polyester 50D 161 grams, sleeves knitted softshell 30D

## Paddock Blue Men's Waterproof Jacket

**Part No.** B24-FJ124-E0 **XX**

**SIZE:** 1S-0S-0M-0L-1L-2L-3L

The garment you need trackside when the weather turns, the Paddock Blue Men's Waterproof Jacket offers functionality, comfort and protection from the elements. With a mix of polyester and elastane in the shell and lining, this jacket is 100% waterproof thanks to dense fabric and taped seams. Internal mesh panels allow good ventilation, while the fixed hood adds another layer of weather protection. Yamaha branding on the chest, sleeve and back adds a final flourish of style.

- 96% polyester, 4% elastane dense weave fabric
- Inside 3D mesh panels for airflow
- Fixed hood with internal stopper
- Reversible zipper with chin guard
- Back stripe graphic
- 100% waterproof 8000 mm-3000 mvp via dense fabric and inside seam taping

NEW



NEW



## Paddock Blue Men's Softshell Jacket

**Part No.** B24-FJ125-E0 **XX**

**SIZE:** 1S-0S-0M-0L-1L-2L-3L

Stylish and at home at the track or outdoors, the two-tone Paddock Blue Men's Softshell Jacket is ideal for regular active use. A blend of polyester and spandex for comfort and freedom of movement, this jacket features a full-length zip and three external pockets for ease of use. Embroidered Yamaha Racing branding and back stripe graphic add a final premium feel.

- Full zipper with storm flap
- Colour contrast dark blue sleeves
- 96% polyester, 4% spandex softshell fabric, fleece inside
- Embroidered branding
- Back stripe graphic
- 3 outer pockets with zippers

## Paddock Blue Men's hoodie

**Part No.** B24-FT117-E0 **XX**

**SIZE:** 1S-0S-0M-0L-1L-2L-3L

Comfortable, adaptable and stylish, the Paddock Blue Men's Sweater is a teamwear classic for wearing to race events, the gym and more. A soft blend of polyester and cotton, it features a full-length zip and fixed hood with a tight closure. Self-fabric hem and cuffs give the sweater a seamless look, with colour contrast black sleeves and external pockets for essentials. Embroidered chest branding and back graphic in white set this garment off.

- Tight hood closure with high neck
- Colour contrast dark blue sleeves
- 60% polyester, 40% cotton double face fabric, 320 grams
- Full zipper with chin guard
- Embroidered logos
- Self-fabric hem and cuffs
- 3 outer pockets with zippers

NEW



NEW



## Paddock Blue Men's T-Shirt

**Part No.** B24-FT119-E0 **XX**

**SIZE:** 1S-0S-0M-0L-1L-2L-3L

A staple item for Yamaha fans everywhere, the Paddock Blue Men's T-Shirt is a simple and comfortable tee for wearing around home or race paddocks. Made from cotton and polyester blend, this tee features colour contrasting raglan sleeves, a crew neck and all-around Yamaha branding for an easy-to-wear, everyday garment.

- Crew neck
- Colour contrast dark blue raglan sleeves
- 50% cotton, 50% polyester single jersey 170 grams
- Printed branding on chest, back and sleeves

## Paddock Blue Men's Polo

**Part No.** B24-FT118-E0 **XX**

**SIZE:** 1S-0S-0M-0L-1L-2L-3L

With a 50/50 blend of cotton and polyester in a pique finish, the Paddock Blue Men's Polo is an iconic item for race paddocks. Featuring a button closure and the collar is specially engineered for comfort, colour contrast arms and embroidered Yamaha branding, this polo is a Paddock Blue classic for wearing out and about.

- 50% polyester, 50% cotton soft touch pique 180 grams
- Collar with knitted shape following the neckline for better comfort
- Embroidered Yamaha branding
- Back stripe graphic
- Button closure

NEW





NEW



## Paddock Blue Men's Long Sleeve T-Shirt

**Part No.** B24-FP121-E0 **XX**

**SIZE:** 1S-0S-0M-0L-1L-2L-3L

A great item for layering your wardrobe, the Paddock Blue Men's Long Sleeve T-Shirt is lightweight and perfect for the outdoors or home. Constructed from cotton and polyester, this tee offers superior comfort with a relaxed fit. Colour contrast sleeves compliment the Yamaha branding on the chest, sleeves and back for a simple and stylish look.

- 50% cotton , 50% polyester , 170 grams
- Relax Fit
- Colour contrast dark blue sleeves
- Back stripe graphic
- Printed branding on chest, back and sleeves

## Paddock Blue Men's Jog Pants

**Part No.** B24-FP120-E4 **XX**

**SIZE:** 1S-0S-0M-0L-1L-2L-3L

Colour matched with the latest generation of Yamaha Racing motorcycles, the Paddock Blue Men's Jog Pants are made to withstand regular activity and wear. Blended from cotton and polyester, these pants are supremely comfortable. A self-fabric waistband allows an easy fit, with two side and one rear pockets for convenience. Subtle Yamaha branding pulls together this eye-catching garment.

- 42% cotton, 58% polyester, double face fabric, 330 grams

NEW





NEW



## Paddock Blue Men's Team Shorts

**Part No.** B24-FP101-E4 **XX**

**SIZE:** 1S-0S-0M-0L-1L-2L-3L

Key to any race team member or fan's wardrobe, the Paddock Blue Men's Team Shorts offer excellent versatility and breathability in hot weather with a mix of polyester and spandex. The waist is adjustable via a buckle, with hip and cargo pockets and a single rear pocket for extra utility. Embroidered Yamaha branding in white creates a stand out look that's at home everywhere.

- Embroidered branding
- 91% polyester, 9% spandex woven fabric
- Hip pockets, cargo pockets and 1 back pocket
- Adjustable waist by buckle

## Paddock Blue Men's Team Pants

**Part No.** B24-FP100-E4 **XX**

**SIZE:** 1S-0S-0M-0L-1L-2L-3L

Key to any race team member or fan's apparel collection, the Paddock Blue Men's Team Pants offer excellent versatility with a mix of polyester and spandex. The waist is adjustable via a buckle, with hip and cargo pockets and a single rear pocket for extra utility. Embroidered Yamaha branding in white creates a stand out look that's at home everywhere.

- Hip pockets, cargo pockets and 1 back pocket
- 91% polyester, 9% spandex woven fabric
- Adjustable waist by buckle
- Embroidered branding

NEW



NEW



## Paddock Blue Adult Team Cap

Part No. B24-FH313-E0-00

Simple and stylish, the Paddock Blue Team Cap is a classic addition to every Yamaha fan's collection. Made from 100% cotton, the cap is one size fits all and presented in racing blue with a colour contrast peak. Breathing holes allow ventilation, with an adjustable strap for comfort. Printed Yamaha branding on the front and sides ensures an iconic style.

- 100% Cotton
- Adjustable plastic strap
- Contrast dark blue visor
- One size fits all
- Breathing holes
- 3D printed Yamaha Racing on front, flat printed branding on side

## Paddock Blue Adult Snapback Cap

Part No. B24-FH330-E1-00

Designed to match the latest Yamaha MX line-up, the Paddock Blue Snapback Cap is a piece of stylish headwear perfect for race days. Made from 100% cotton and one size fits all, it features an adjustable plastic strap, ventilation holes and sweatband for comfort in all climates. With 3D branding on the front and sleek racing stripes on the side, this is a true racer's snapback cap.

- 100% Cotton
- 3D printed Yamaha Racing on front, flat printed racing stripes on side
- Adjustable plastic strap
- Breathing holes
- One size fits all

NEW



NEW



## Paddock Blue Adult Beanie

**Part No.** B24-FH314-E0-00

When the weather at the track turns cold, the Paddock Blue Adult Beanie is there to keep you warm. Made from a soft and flexible polyester and acrylic, this beanie is presented in a two-tone blue style featuring Yamaha branding, with fine ribbing and darts in the top to ensure a comfort fit for all.

- 60% recycled polyester, 40% acrylic
- Ribbed double fabric
- One size fits all
- Darted top for better fit

## Paddock Blue Adult Ribbed Beanie

**Part No.** B24-FH316-E0-00

Chunky, colourful and made for warmth, the Paddock Blue Adult Ribbed Beanie offers a cosy unisex fit wherever life takes you. Knitted from 100% cotton, this beanie's thick two-tone ribbing ensures comfort and a strong shape. A turn up hem features an embroidered Yamaha Racing badge for an unmistakable fashion item.

- Turn up front with Yamaha Racing badge
- 100% cotton knitted ribbings
- One size fits all

NEW





## Paddock Blue Neck Tube

**Part No.** N23-PB006-E0-00

Reversible and multifunctional, the Paddock Blue neck tube is double layered and perfect for regular outdoor use. With iconic white Yamaha Racing and GYTR branding on both sides, the double-layered racing blue polyester gives the neck tube a soft touch and provides protection against the elements while riding.

- Reversible, with different design inside and outside
- White Yamaha Racing logos
- Double-layered for extra comfort
- 100% polyester soft touch

## Paddock Blue Women's Waterproof Jacket

**Part No.** B24-FJ201-E0 **XX**

**SIZE:** 1S-0S-0M-0L-1L-2L

The jacket you want to be wearing in the rain, the Paddock Blue Women's Waterproof Jacket offers functionality, protection from the elements and a cosy feel. With a blend of polyester and elastane in the shell, the jacket features dense fabric and taped seams for 100% waterproofing. Internal mesh panels provide ventilation, with a fixed hood adding layer of weather protection. Yamaha branding on the chest, sleeve and back adds a final flourish of style.

- 100% waterproof 8000 mm-3000 mvp via dense fabric and inside seam taping
- Inside 3D mesh panels for airflow
- Fixed hood with internal stopper
- 96% polyester, 4% elastane dense weave fabric
- 3D branding on chest, printed sleeve branding

**NEW**





NEW



## Paddock Blue Women's Softshell Jacket

**Part No.** B24-FJ202-E0 **XX**

**SIZE:** 1S-0S-0M-0L-1L-2L

Perfect for regular outdoor wear, the two-tone Paddock Blue Women's Softshell Jacket offers style and comfort for the home or at the track. Made from a blend of polyester and spandex that allows wide freedom of movement, this jacket features a full-length zip and three external pockets for ease of use. Embroidered Yamaha Racing branding and a back stripe graphic add extra premium feel.

- Full zipper with storm flap
- Colour contrast dark blue sleeves
- Back stripe graphic
- 96% polyester, 4% spandex softshell fabric, fleece inside
- Embroidered branding
- 3 outer pockets with zippers

## Paddock Blue Women's Hoodie

**Part No.** B24-FT217-E0 **XX**

**SIZE:** 1S-0S-0M-0L-1L

Stylish and adaptable for daily wear, the Paddock Blue Women's Sweater/Hoodie is a comfy classic for wearing to race events, the gym and more. Made from a soft blend of polyester and cotton, this garment features a full-length zip and fixed hood ensure a snug fit. Self-fabric hem and cuffs give a seamless look, with colour contrast black sleeves and external pockets for essentials. Embroidered chest branding and back graphic in white give a classic teamwear look.

- 3 outer pockets with zippers

NEW



NEW



## Paddock Blue Women's T-Shirt

**Part No.** B24-FT219-E0 **XX**

**SIZE:** 1S-0S-0M-0L-1L-2L

A soft and comfy garment for Yamaha fans, the Paddock Blue Women's T-Shirt is perfect for wearing around home or out and about. Made from a blend of cotton and polyester, this tee features a V-neck, colour contrasting raglan sleeves and Yamaha branding on the chest, sleeves and back for an essential everyday garment.

- V-neck
- Colour contrast dark blue raglan sleeves
- 50% cotton, 50% polyester, 170 grams
- Printed branding on chest, back and sleeves

## Paddock Blue Women's Polo

**Part No.** B24-FT218-E0 **XX**

**SIZE:** 1S-0S-0M-0L-1L-2L

The Paddock Blue Women's Polo is a must-have for a smart casual look at events. Made in a 50/50 blend of cotton and polyester with a pique finish, the polo features a specially engineered collar and button closure, colour contrast arms and embroidered Yamaha branding. An absolute classic of Paddock Blue style.

- 50% polyester, 50% cotton soft touch pique 180 grams
- Special knitted collar following neckline, for more comfort
- Contrast colour dark blue sleeves and collar
- Embroidered Yamaha branding
- Back stripe graphic
- Button closure at self-fabric collar

NEW



NEW



## Paddock Blue Kid's Waterproof Jacket

Part No. B24-FJ401-E0 **XX**

SIZE: 06-08-10-12-14-16-18

Offering kids comfort, warmth and style in winter, the Paddock Blue Kid's Jacket is ideal for active youngsters. Made from soft 100% polyester with padded tunnels, the jacket features a fixed lined hood for head protection and a full-length zip with outer pockets. Colour contrasting in blue and dark blue, printed Yamaha branding gives an eye-catching addition.

- 100% polyester 50D, 161 grams

*No	Size	Age
06	92	1,5-2 yrs
08	104	3-4 yrs
10	116	5-6 yrs
12	128	7-8 yrs
14	140	9-10 yrs
16	152	11-12 yrs
18	164	13-14 yrs

## Paddock Blue Kid's Softshell jacket

Part No. B24-FJ402-E0 **XX**

SIZE: 06-08-10-12-14-16-18

Comfortable for their first race events and outdoors, the Paddock Blue Kid's Softshell Jacket is perfect for active youngsters. Constructed from a blend of polyester and spandex that gives comfort and freedom of movement, the softshell features a full-length zip and three external pockets. Embroidered Yamaha Racing branding and back stripe graphic add a final stylish touch.

- Full zipper with storm flap

*No	Size	Age
06	92	1,5-2 yrs
08	104	3-4 yrs
10	116	5-6 yrs
12	128	7-8 yrs
14	140	9-10 yrs
16	152	11-12 yrs
18	164	13-14 yrs

NEW



NEW



## Paddock Blue Kid's Hoodie

**Part No.** B24-FT417-E0 **XX**

**SIZE:** 06-08-10-12-14-16-18

Comfy and cosy for little ones, the Paddock Blue Kid's Hoody is a classic for outfitting them for race events and more. Made from a soft blend of polyester and cotton in two-tone blue, it features a full-length zip and fixed hood with a tight closure. Self-fabric hem cuffs give a snug fit for the arms, with external pockets for keeping hands warm. Embroidered chest branding and back graphic in white set off this must-have hoodie for the kids.

- 2 outer zip pockets

*No	Size	Age
06	92	1,5-2 yrs
08	104	3-4 yrs
10	116	5-6 yrs
12	128	7-8 yrs
14	140	9-10 yrs
16	152	11-12 yrs
18	164	13-14 yrs

## Paddock Blue Kid's T-Shirt

**Part No.** B24-FT419-E0 **XX**

**SIZE:** 06-08-10-12-14-16-18

An absolute essential for young Yamaha fans, the Paddock Blue Kid's T-Shirt is a classic two-tone tee perfect for regular use. Made from a cotton and polyester blend, this tee features colour contrasting raglan sleeves, a crew neck and all-around Yamaha branding for a simple and useful everyday garment.

- Printed branding on chest, back and sleeves

*No	Size	Age
06	92	1,5-2 yrs
08	104	3-4 yrs
10	116	5-6 yrs
12	128	7-8 yrs
14	140	9-10 yrs
16	152	11-12 yrs
18	164	13-14 yrs

NEW







## Paddock Blue Essentials Collection

Featuring Yamaha's bestselling garments designed for regular wear at race tracks and more, the Paddock Blue Essentials Collection offers exactly what it says. With a range of cotton and cotton blend items from t-shirts to hoodies and caps, there's something for adults and kids alike to enjoy wearing. With classic Yamaha colours and branding, the Essentials Collection is part of every staple wardrobe for the Yamaha fan.

NEW



## Paddock Blue Essentials Men's T-Shirt

**Part No.** B24-FT112-E0 **XX**

**SIZE:** 1S-0S-0M-0L-1L-2L-3L

Simple and eye-catching, the Paddock Blue Essentials Men's T-Shirt is a must for every Yamaha fan's wardrobe. Made from 100% cotton for a consistent soft feel, this tee's regular fit and crew neck ensure a comfortable fit for any wearer. Printed Yamaha chest and arm branding give an iconic paddock style.

- Crew neck

## Paddock Blue Essentials Men's Polo

**Part No.** B24-PB112-E0 **XX**

**SIZE:** 1S-0S-0M-0L-1L-2L-3L

An absolute classic of Yamaha aesthetic, the Paddock Blue Essentials Men's Polo is a cotton and elastane relaxed fit construction with a textured pique finish for extra premium feel. A button closure neck gives multiple comfort levels, with a ribbed collar and sleeve ends. Printed Yamaha branding on the chest and arm complete the classic racer's polo look.

- Button closure

NEW



NEW



## Paddock Blue Essentials Adult Cap Blue

**Part No.** B24-FH311-E0-00

An essential item for warmer days at race tracks and events, the Paddock Blue Essentials Adult Cap Blue features iconic Yamaha Racing branding. Made from 100% cotton and fitted for adults, an adjustable strap and inner sweatband offer comfort to suit you, with breathing holes for ventilation. 3D and printed logos finish off the cap to help you stand out trackside.

- Plastic adjustable strap

## Paddock Blue Essentials Unisex Hoodie

**Part No.** B24-PB012-B0 xx

**SIZE:** 1S-0S-0M-0L-1L-2L-3L

With a classic Yamaha branded white-on-black style, the Paddock Blue Essentials Unisex Hoodie is an ideal item for casual wear. Made of a cotton and polyester blend, brushed inside, this hoodie features a lined hood with drawstring cords. A ribbed hem and cuffs ensure a good fit, with a kangaroo pocket for carrying essentials.

- Ribbed hem and cuffs

NEW



NEW



### Paddock Blue Essentials Unisex T-Shirt

**Part No.** B24-PB011-B0 XX

**SIZE:** 1S-0S-0M-0L-1L-2L-3L

Designed for every Yamaha fan, the Paddock Blue Essentials Unisex T-Shirt offers a comfortable fit and an eye-catching design. Made from 100% cotton for a soft feel, unisex fit and crew neck combine for an all-round fan pleasing garment.

- Crew neck

### Paddock Blue Essentials Adult Cap Black

**Part No.** B24-FH011-B0-00

Simple but essential for hot days, the Paddock Blue Essentials Adult Cap Black is made from 100% cotton. Fitted for adults, an adjustable strap and inner sweatband offer comfort to suit you, with breathing holes for ventilation. 3D and printed logos finish off the cap with staple Yamaha styling.

- 100% Cotton

NEW





NEW



## Paddock Blue Bucket Hat Black

Part No. B24-AH305-B0-00

Created for comfort and shade on hot sunny days, the Paddock Blue Bucket Hat Black is a simple and eye-catching standout of the Streetwear range. Made from 100% cotton in one size fits all, it features inner custom taping and embroidered Yamaha branding. A simple and easy to carry item for sunny days out.

- 100% Cotton
- Custom inner taping
- One size fits all

## Paddock Blue Essentials Women's T-Shirt

Part No. B24-PB211-E0 xx

SIZE: 1S-0S-0M-0L-1L-2L

Simple and striking, the Paddock Blue Essentials Women's T-Shirt is an essential item for every Yamaha fan's wardrobe. Made from 100% cotton for a soft feel, this tee's relaxed fit and V-neck ensure a comfy fit for all wearers. Printed Yamaha chest and arm branding complete a classic racing blue Yamaha look.

- V-neck

NEW



NEW



## Paddock Blue Essentials Kid's T-Shirt

**Part No.** B24-FT412-E0 **XX**

**SIZE:** 06-08-10-12-14-16-18

Bright, cool and stylish, the Paddock Blue Essentials Kid's T-Shirt is the perfect garment for young Yamaha fans. 100% cotton construction means a consistently soft feel, with a crew neck ensuring a comfortable fit for any youngster. Printed Yamaha chest and arm branding give an iconic paddock style.

- Crew neck

*No	Size	Age
06	92	1,5-2 yrs
08	104	3-4 yrs
10	116	5-6 yrs
12	128	7-8 yrs
14	140	9-10 yrs
16	152	11-12 yrs
18	164	13-14 yrs

NEW

## Paddock Blue Essentials Kid's Cap

**Part No.** B24-FH412-E0-00

Protect the little ones from the sun with the stylish Paddock Blue Essentials Kid's Cap. Made from 100% cotton, this cap is fitted for kids with an adjustable strap and inner sweatband for comfort in the heat. Breathing holes offer ventilation, with 3D and printed logos for extra flair.

- 100% Cotton





## Paddock Blue Streetwear Collection

A fun, urban range taking design hints from hip-hop and sportswear of the 80s and 90s, the Paddock Blue Streetwear Collection offers you colourful, light and everyday casual wear across t-shirts, hoodies, jackets and bottoms. Brand new headwear including super fashionable bucket hats adds the final touch of style to an exciting chapter of Yamaha apparel.

NEW



## Paddock Blue Men's Hoodie

**Part No.** B24-FT116-E2 **XX**

**SIZE:** 1S-0S-0M-0L-1L-2L-3L

Colourful, comfortable and easy to throw on, the Paddock Blue Men's Hoodie is a relaxed piece of Streetwear for everyday wear. Made from cotton and polyester in a slick French Terry finish, colour blocks of racing blue, black and white set off the garment's look with retro tape down the arms and shoulders. A lined hood with draw cord, ribbed hem and elastic cuffs offer comfort in all climates, with staple iconic Yamaha Racing branding.

- 100% polyester 50D, 161 grams
- Printed Yamaha branding
- Fixed hood with lining
- Zip front pockets
- Pearl padding in body

## Paddock Blue Men's T-Shirt

**Part No.** B24-FT113-E2 **XX**

**SIZE:** 1S-0S-0M-0L-1L-2L-3L

Perfect for layering with your Streetwear wardrobe, the Paddock Blue Men's T-Shirt offers a blend of racing and urban style. Made from a soft mix of cotton and elastane for active use, the tee features a three-tone design of racing blue, black and white panels with retro arm and shoulder tape. A crew neck ensures a good fit, with centred Yamaha Racing branding on the chest to really make an impact.

- 95% cotton, 5% elastane jersey, 180 grams
- Retro-style pattern tape on sleeves and shoulder
- Printed Yamaha Racing and speedblock branding
- Crew neck

NEW





NEW



## Paddock Blue Men's Jogging Pants

**Part No.** B24-FP102-E2 **XX**  
**SIZE:** 1S-0S-0M-0L-1L-2L-3L

With stunning racing blue and contrasting stripes, the Paddock Blue Men's Jogging Pants offer comfort and urban style. Featuring a blend of cotton and polyester in a French Terry finish, the pant legs are highlighted with a white stripe and retro style tape to pair with other Streetwear garments. With a tapered fit and elastic waist, the legs also feature a subtle zip opening at the ends for breathability. Embroidered Yamaha Racing branding gives them a final touch of style.

- 80% cotton , 20% polyester , French Terry finish, 380 grams
- Ribbed waist with draw cord
- Tapered fit
- Retro-style pattern tape on sleeves and shoulder
- Embroidered Yamaha Racing and speedblock branding
- Light brushed inside main fabric
- Zip opening at ankles

NEW

## Paddock Blue Unisex Fleece

**Part No.** B24-FJ121-E2 **XX**  
**SIZE:** 1S-0S-0M-0L-1L-2L-3L

Designed for anyone to slip into for warmth and comfort, the Paddock Blue Unisex Fleece is ideal for cold days adventuring. 100% polyester in blocks of racing blue, black and white, it features a high polar fleece with ¼ zip for superior protection from the elements. Inner pockets allow you to carry essentials, while retro style shoulder tape and embroidered Yamaha Racing branding sets the whole Streetwear look off.

- 1/4 length zip collar
- 100% polyester anti pilling polar fleece, 260 grams
- Retro-style pattern tape
- Embroidered Yamaha Racing and speedblock branding
- Inside pockets



NEW



## Paddock Blue Adult Cap

Part No. B24-FH315-E1-00

Matching the striking new Streetwear Collection, the Paddock Blue Adult Cap is a slick headwear item that is classic Yamaha. Made from 100% cotton in one size fits all, it features the collection's staple racing blue, black and white colour blocks with embroidered Yamaha Racing and speedblock branding. An adjustable plastic strap, ventilation holes and sweatband offer comfort in all climates.

- 100% Cotton
- Adjustable plastic strap
- Breathing holes
- One size fits all
- Embroidered Yamaha Racing and speedblock branding

## Paddock Blue Men's Swim Shorts

Part No. B24-UU100-E0 **XX**

SIZE: 0S-0M-0L-1L-2L

Designed to stand out at the beach or pool, the Paddock Blue Men's Swim Shorts is an eye-catching Streetwear item for water activities. 100% polyamide in racing blue with contrasting white stripe and retro style tape, the shorts have a mesh inner lining for comfort when wet, and elasticated waist with draw cord for adjusting comfort. Embroidered Yamaha Racing branding gives the final touch of class.

- 100% polyamide
- Elastic waist with draw cord
- Mesh inner lining
- Retro-style pattern tape
- Embroidered Yamaha Racing and speedblock branding
- Two hip pockets and Velcro back pocket

NEW



NEW

*No	Size	Age
06	92	1,5-2 yrs
08	104	3-4 yrs
10	116	5-6 yrs
12	128	7-8 yrs
14	140	9-10 yrs
16	152	11-12 yrs
18	164	13-14 yrs



## Paddock Blue Kid's Swim Shorts

Part No. B24-UU400-E0 **XX**

SIZE: 06-08-10-12-14-16-18

Made for kids that love the water, the Paddock Blue Kid's Swim Shorts is a cool Streetwear item that they'll love to wear at the beach or pool. Made from 100% polyamide in racing blue with contrasting white stripe and retro-style tape, the shorts have a mesh inner lining for comfort in the water and a draw cord elastic waist for comfort. Embroidered Yamaha Racing branding gives a final touch of Yamaha style.

- 100% polyamide
- Two hip pockets and Velcro back pocket
- Mesh inner lining
- Elastic waist with draw cord
- Retro-style pattern tape
- Embroidered Yamaha Racing and speedblock branding

## Paddock Blue Bucket Hat Blue

Part No. B24-JH305-E0-00

A must-have headwear item in iconic Yamaha racing blue, the Paddock Blue Bucket Hat Blue is retro classic part of the Streetwear Collection. Made from 100% cotton in one size fits all, it features inner custom taping and embroidered Yamaha Racing branding. A simple and easy to carry item for sunny days out.

- 100% Cotton
- Custom inner taping
- One size fits all
- Embroidered Yamaha Racing branding

NEW



NEW



## Paddock Blue Women's Jacket

**Part No.** B24-FJ225-E2 **XX**

**SIZE:** 1S-0S-0M-0L-1L-2L

Slick, eye-catching and urban, the Paddock Blue Women's Jacket is the perfect outerwear layer for daily wear. 100% polyester pongee fabric construction ensures strength of the jacket, with racing blue, black and white coloured panels creating an iconic Yamaha style. Padded body tunnels deliver a soft feel in and out, with front pockets, a full-length zip and storm flap for weather protection. Retro style arm and shoulder tape captures the Streetwear feel with printed Yamaha Racing branding.

- Full-length nylon block teeth zipper with chin guard.
- Fixed and lined three-panel hood
- Retro-style pattern tape on sleeves and shoulder
- Two front zip pockets

## Paddock Blue Women's Hoodie

**Part No.** B24-FJ223-E2 **XX**

**SIZE:** 1S-0S-0M-0L-1L-2L

Bright, easy to wear and stylish, the Paddock Blue Women's Hoodie is a piece of Streetwear designed for your everyday. Constructed from cotton and polyester in a French Terry finish, this sweater/hoodie is set off in colour blocks of racing blue, black and white, with retro style tape on the arms and shoulders. A lined draw cord hood, ribbed hem and elastic cuffs provide comfort in changing climates, with iconic Yamaha Racing branding in white.

- 80% cotton , 20% polyester , French Terry finish, 380 grams
- Retro-style pattern tape on sleeves and shoulder
- Lined hood with draw cord
- Light brushed inside
- Embroidered Yamaha Racing and speedblock branding
- Ribbed hem and elastic cuffs
- Full-length zip

NEW





NEW



## Paddock Blue Women's T-Shirt

**Part No.** B24-FT212-E2 **XX**

**SIZE:** 1S-0S-0M-0L-1L-2L

The ideal base to layer your Streetwear wardrobe with, the Paddock Blue Women's T-Shirt offers classic Yamaha Racing and urban style. Made from a blend of cotton and elastane for comfort and free movement, the tee is a three-tone design of racing blue, black and white panels with retro style arm and shoulder tape. A crew neck ensures a good fit, with centred Yamaha Racing branding on the chest.

- Crew neck
- Retro-style pattern tape on sleeves and shoulder
- 95% cotton , 5 % elastane jersey, 180 grams
- Printed Yamaha Racing and speedblock branding

## Paddock Blue Women's Jogging Pants

NEW

**Part No.** B24-FP202-E2 **XX**

**SIZE:** 1S-0S-0M-0L-1L-2L

Designed in Yamaha's classic racing blue with contrasting leg stripes, the Paddock Blue Women's Jogging Pants are comfortable and great for relaxed daily wear. Made from cotton and polyester in a French Terry fabric, the pant legs are highlighted with a white stripe and retro style tape, perfect for pairing with your Streetwear upper garments. With a tapered fit and elastic waist, the legs also feature a subtle zip opening at the ends for breathability. Embroidered Yamaha Racing branding gives a final touch of urban style.

- 80% cotton, 20% polyester French Terry, 380 grams
- Light brushed inside
- Retro-style pattern tape
- Embroidered Yamaha Racing and speedblock branding
- Ribbed waist with draw cord
- Zip opening at ankles



NEW



## Paddock Blue Kid's Beanie

Part No. B24-FH410-E1-00

Giving kids their own part of Streetwear, the Paddock Blue Kid's Beanie keeps them warm when the weather turns. Made from a very comfy mix of polyester and acrylic with fine ribbing in classic Yamaha racing blue, black and white, this beanie features a fun multicolour pom-pom and turn-up cuff with embroidered Yamaha Racing branding.

- 60% polyester , 40% acrylic
- Turn-up cuff
- Embroidered Yamaha Racing and speedblock branding
- Kids fit
- Multicolour pom-pom
- Fine ribbing

**NEW****E-com exclusive**

## Monster Energy Yamaha MotoGP Team Replica Windbreaker Men

**Part No.** B24-GP102-B4 **XX****SIZE:** 0S-0M-0L-1L-2L

Striking, lightweight and eye-catching, the Monster Energy Yamaha MotoGP Team Men's Replica Windbreaker for men is an essential item for low temperatures and windy days. Designed in a striking mix of Yamaha blue, black and grey camo side highlights that are inspired by the team's M1 motorcycle, this windbreaker features a fixed lined hood and side pockets for personal belongings.

- 100% polyester
- Fixed lined hood
- Full length zipper, side pockets
- Lightweight comfort fit, wind resistant
- Camo side panel detailing
- Printed Yamaha Racing and Monster Energy® branding

## Monster Energy® Yamaha MotoGP Team Replica Sweater Men

**Part No.** B24-GP106-B4 **XX****SIZE:** 0S-0M-0L-1L-2L

Designed for regular wear in busy paddocks or outdoors, the Monster Energy Yamaha MotoGP Team Men's Replica Sweater is essential for fans of the team. A stylish mix of Yamaha blue with Paddock Black and grey camo side panel highlights is inspired by the team's M1 motorcycle, making this sweater a must-have. The lightweight and quick-drying fabric combines with a tight-fitting hood and full-length zipper for all-round comfort in mixed weather, with two side pockets for essential items.

- 100% polyester
- Tight hood closure with high neck
- Full length zipper with closure
- Two side pockets
- Lightweight fit with high collar
- Comfortable and quick-drying
- Camo side detailing
- Printed Yamaha Racing and Monster Energy® branding

**NEW****E-com exclusive**

NEW



## Monster Energy® Yamaha MotoGP Team Replica Polo Men

Part No. B24-GP110-B4 **XX**

SIZE: 0S-0M-0L-1L-2L

A must-have items for race days, the Monster Energy® Yamaha MotoGP Team Men's Replica Polo Shirt is a stylish item worn by the race team around the world. 100% polyester in Racing Black and Blue and styled on the M1 bike, the shirt is printed with Yamaha Racing, Monster Energy® and sponsor logos, with camo print side panels for extra edge. A specially engineered button/zip closure collar ensures a comfort fit.

- 100% polyester
- Comfort fit
- Zip closure collar
- Printed Yamaha Racing and Monster Energy® branding
- Camo print side panels

NEW

## Monster Energy® Yamaha MotoGP Team T-Shirt Men

Part No. B24-GP111-B4 **XX**

SIZE: 0S-0M-0L-1L-2L

An essential item in the Monster Energy® Yamaha MotoGP Team wardrobe, the Men's Replica T-Shirt embodies the racing spirit and passion of the premier Yamaha race team. Designed for comfortable every-day use, this lightweight, 100% polyester crew neck tee features M1-inspired colour contrast blue and black with white detailing and camo side panels. A final touch of racing style is added with vibrant Yamaha Racing and Monster Energy® branding on the chest, back and arms.

- 100% polyester
- Crew neck
- Colour contrast raglan sleeves
- Camo print side panels
- Printed Yamaha Racing and Monster Energy® branding



**NEW**

## Monster Energy® Yamaha MotoGP Team Replica Cap Adult

**Part No.** N23-GP109-B4-00

A staple item in Yamaha pit boxes and grandstands around the world, the Monster Energy® Yamaha MotoGP Team Adult Replica Cap is stylish and functional for sunny race days. 100% cotton and designed in the blue and black of the team's M1 race bike, an adjustable strap, inner sweatband and breathing holes mean a comfortable fit for everyone. Yamaha Racing and Monster Energy® branding on the peak and sides display your MotoGP racing passion wherever you travel.

- 50% cotton, 50% polyester
- Adjustable plastic strap
- Breathing holes
- Inner sweatband
- 3D Yamaha Racing and Monster Energy® branding
- One-size-fits-all
- Printed Yamaha Racing and Monster Energy® branding



NEW



## Fabio Quartararo Zip Sweater Men

**Part No.** B24-QA106-E1 **XX**

**SIZE:** 0S-0M-0L-1L-2L

Fabio Quartararo Men's Sweater offers warmth and comfort on chillier days supporting El Diablo. Made from a blend of cotton and polyester in Paddock Blue and Black, it features a full-length zip and fixed black hood. Printed with Fabio's red '20' logo, Yamaha Racing and M1 logos in white on the chest, right arm and back, the sweater also carries white piping for a slick colour contrast.

- 80% cotton, 20% polyester, French Terry
- Relaxed fit
- Fixed lined hood
- Full length zipper
- Side pockets
- Printed Yamaha Racing, M1 and Quartararo logos

## Fabio Quartararo T-Shirt Men

NEW

**Part No.** B24-QA110-E1 **XX**

**SIZE:** 0S-0M-0L-1L-2L

A must-have for fans of 'El Diablo'! The Fabio Quartararo Men's T-Shirt is ideal to wear while you cheer on France's first premier class World Champion from the grandstands or at home. 100% cotton in two-tone Paddock Blue and Black, the tee features the red '20' logo from Fabio's suit and M1 bike on the chest and back. Yamaha Racing and M1 logos are printed on the chest, right sleeve and back, highlighted by white piping that completes the official look of a comfortable and versatile tee.

- 100% cotton
- Comfort fit
- Two-tone Paddock Blue and Black
- White piping detail
- Printed Quartararo, M1 and Yamaha Racing logos



**NEW**

## Fabio Quartararo Cap Adults

**Part No.** B24-QA120-E1-00

A must-have for warmer days trackside and outside, the Fabio Quartararo Adults Cap is an essential addition to a race fan's wardrobe. Made from 100% cotton, the cap features a curved sandwich peak embroidered with Fabio's red '20' logo. A Racing Blue front carries the Yamaha Racing logo in white, with the stylish cap completed by M1 and 20 logos on the back and side. An adjustable strap makes it comfortable for a range of head sizes.

- 100% cotton
- Adjustable strap
- Printed Yamaha Racing logos
- Printed 3D Yamaha Racing logo on front
- Printed flat Quartararo '20' logo on peak
- Printed M1 and Quartararo logos on back and side
- Unisex fit

**NEW**

## Monster Energy® Yamaha Factory MXGP Team Replica Sweater Men

**Part No.** B24-M0117-B4 **XX**

**SIZE:** 1S-0S-0M-0L-1L-2L-3L

Lightweight, comfortable and essential for race weekends and beyond, the Monster Energy® Yamaha Factory MXGP Team Men's Replica Sweater is an ideal daily wear garment. Featuring YZ450FM-inspired blue and black tones with white highlights and back stripe graphic, the sweater features a tight-fitting hood for warmth and comfort, with a full-length zip and external pockets for protection from the elements and room for personal items.

- 40% cotton, 60% polyester, double face fabric 320 grams
- Tight hood closure with high neck
- Full-length zip with closure, three outer zip pockets
- Self-fabric hem and cuffs, colour contrast sleeves
- Embroidered Yamaha Racing and Monster Energy® branding
- Monster Energy® logo on chest and back
- Backside stripe graphic

## Monster Energy® Yamaha Factory MXGP Team Replica Polo Shirt Men

**NEW**

**Part No.** B24-M0118-B4 **XX**

**SIZE:** 1S-0S-0M-0L-1L-2L-3L

A smart-casual essential for race days, the Monster Energy® Yamaha Factory MXGP Team Men's Replica Polo Shirt is a sophisticated item designed with racing spirit. A black torso is highlighted with racing blue arms styled on the YZ450FM machine, with white stripe details on the back and sides. A specially engineered button closure collar ensures a comfort fit, with embroidered Yamaha Racing and Monster Energy® branding for a true pit lane classic.

- 50% cotton, 50% polyester
- Specially engineered collar with button closure
- Colour contrast sleeves
- Embroidered Yamaha Racing and Monster Energy® branding
- Backside stripe graphic



**NEW**

## Monster Energy® Yamaha Factory MXGP Team Replica T-Shirt Men

**Part No.** B24-M0119-B4 **XX**

**SIZE:** 1S-0S-0M-0L-1L-2L-3L

An essential item in the Monster Energy® Yamaha Factory MXGP Team wardrobe, the Men's Replica T-Shirt embodies the racing spirit and passion of the premier Yamaha MX race team. Designed for comfortable every-day use, this lightweight crew neck tee features YZ450FM-inspired colour contrast blue and black with white detailing. A final touch of racing style is added with vibrant Yamaha Racing and Monster Energy® branding on the chest, back and arms.

- 50% cotton, 50% polyester
- Crew neck
- Colour contrast raglan sleeves
- Printed Yamaha Racing and Monster Energy® branding
- Backside stripe graphic

## Monster Energy® Yamaha Factory MXGP Team Replica Sweater Women

**NEW**

**Part No.** B24-M0227-B4 **XX**

**SIZE:** 1S-0S-0M-0L-1L-2L

Boldly designed and comfortable, the Monster Energy® Yamaha Factory MXGP Team Women's Replica Sweater offers warmth and versatility for changing trackside conditions. Styled after the iconic blue and black livery of the YZ450FM race bike, the sweater features white highlights on the back and side.

- 40% cotton, 60% polyester, double face fabric 320 grams
- Tight hood closure with high neck
- Full-length zip with closure
- Two outer zip pockets
- Self-fabric hem and cuffs
- Colour contrast sleeves
- Embroidered Yamaha Racing and Monster Energy® branding
- Monster Energy® logo on chest and back
- Backside stripe graphic



NEW



## Monster Energy® Yamaha Factory MXGP Team Replica T-Shirt Women

**Part No.** B24-M0229-B4 **XX**

**SIZE:** 1S-0S-0M-0L-1L-2L

An essential layer of the Monster Energy® Yamaha Factory MXGP Team wardrobe, the Women's Replica T-Shirt captures the passion and energy of the MX team. Designed for comfortable, every-day wear at races and home, the tee features YZ450FM-inspired colour contrast blue and black with white detailing and a V-neck for breathability. Extra racing style is added with iconic Yamaha Racing and Monster Energy® branding on the chest, back and arms.

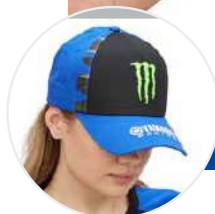
- 50% cotton, 50% polyester, 170 grams
- V-neck
- Colour contrast raglan sleeves
- Printed Yamaha Racing and Monster Energy® branding
- Backside stripe graphic

## Monster Energy® Yamaha Factory MXGP Team Replica Cap Adult

**Part No.** B24-M0331-B4-00

A staple item in Yamaha pit boxes and grandstands around the world, the Monster Energy® Yamaha Factory MXGP Team Adult Replica Cap is stylish and functional for sunny race days. 100% organic cotton and designed in the blue and black of the team's YZ450FM race bike, an adjustable strap, inner sweatband and breathing holes mean a comfortable fit for everyone. Yamaha Racing and Monster Energy® branding on the peak and sides display racing passion wherever you travel.

- 100% cotton and soft polyester mesh mix
- Adjustable plastic strap
- Breathing holes
- Inner sweatband
- 3D Yamaha Racing and Monster Energy® branding on peak
- Printed Yamaha Racing branding on side
- One-size-fits-all



NEW



NEW



## Pata Prometeon Yamaha WorldSBK Official Team Replica Sweater Men

**Part No.** B24-SB109-E0 **XX**

**SIZE:** 1S-0S-0M-0L-1L-2L-3L

A must-have racing item for fans of the Pata Prometeon Yamaha WorldSBK Official Team, the Men's Replica Sweater is versatile and comfortable at the race track or home. Made from a blend of cotton and polyester in iconic Paddock Blue, it features three front pockets and a tight-fitting lined hood for warmth in cold weather.

- 40% cotton, 60% polyester, double face fabric, 320 grams
- Comfort fit with high neck closure
- Raglan sleeves
- Full-length zipper
- Lined hood, three front pockets
- Self-fabric cuffs and hem
- Printed Yamaha and sponsor logos
- Contrasting two-toned hemming

## Pata Prometeon Yamaha WorldSBK Official Team Replica Polo Men

**Part No.** B24-SB119-E0 **XX**

**SIZE:** 1S-0S-0M-0L-1L-2L-3L

An iconic pitlane sight, the Prometeon Yamaha WorldSBK Official Team Men's Replica Polo is an essential item for the team and their fans. Lightweight, breathable and comfortable thanks to its soft cotton and polyester blend, this polo is designed for regular active use at the track. Its knitted black collar also features a button closure for breathability. The chest, right arm and back feature printed Yamaha WorldSBK and sponsor logos to complete this team replica design.

- 50% cotton, 50% polyester, pique fabric 180 grams
- Comfort fit
- Button closure collar
- Printed and embroidered Yamaha WorldSBK and sponsor branding on chest, arm and back

NEW



NEW



## Pata Prometeon Yamaha WorldSBK Official Team Replica T-Shirt Men

**Part No.** B24-SB112-E0 **XX**

**SIZE:** 1S-0S-0M-0L-1L-2L-3L

An essential part of the Pata Prometeon Yamaha WorldSBK Official Team wardrobe, the Men's Replica T-Shirt is comfy and lightweight. Perfect for daily active use, the cotton and polyester blend makes it breathable in warm weather and a good second layer in colder climates. The chest, right arm and back feature printed WorldSBK sponsor logos and white Yamaha Racing logos, while the two-tone black and blue neckline and black arm hems bring the full team replica look together.

- 50% cotton, 50% polyester, single jersey 170 grams
- Crew neck
- Raglan sleeves
- Printed and embroidered Yamaha WorldSBK and sponsor branding on chest, arm and back

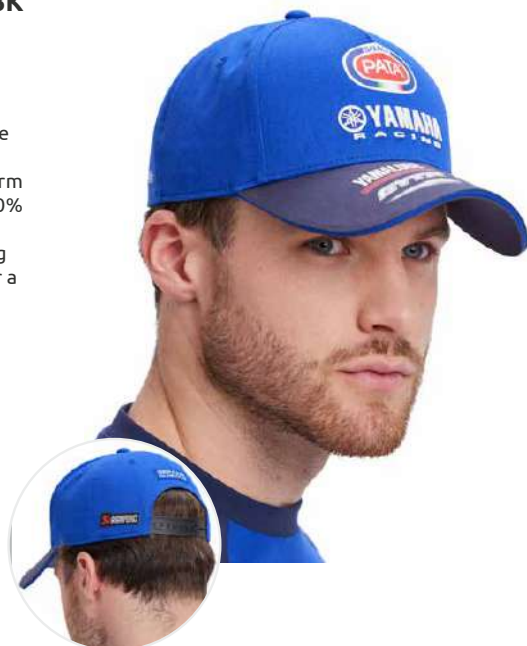
NEW

## Pata Prometeon Yamaha WorldSBK Official Team Replica Cap Adult

**Part No.** B24-SB111-E0-00

Popular with both Yamaha riders and fans, the Pata Prometeon Yamaha WorldSBK Official Team Adult Replica Cap is a must-have for warm climates and sunny weekends. Made from 100% organic cotton in Paddock Blue with a black peak, this 5-panel unisex cap fits all, featuring printed and 3D Yamaha and sponsor logos for a classic pit lane accessory.

- 100% cotton
- Adjustable strap
- Colour contrast stitching
- Ventilation holes
- Printed and 3D Yamaha Racing and sponsor logos
- Unisex, one size fit all



NEW



## Jonathan Rea T-Shirt Men

**Part No.** B24-REA01-E0 **XX**

**SIZE:** 1S-0S-0M-0L-1L-2L-3L

The perfect tee for fans of the 6-time WorldSBK Champion, the Jonathan Rea Men's T-Shirt is designed to help you show support for Jonny in his first season with Yamaha. Designed in iconic Paddock Blue from a comfortable cotton and elastane blend, it features a printed 'JR' in the centre chest, along with '65' on the right breast and Yamaha Racing on the left. Yamaha branding continues on the sleeves, with a back stripe and '65' print on the centre back completing a tee worthy of a Champion.

- 95% cotton, 5% elastane, single jersey, 180 grams
- Crew neck, comfort fit
- Raglan sleeves
- Printed and embroidered Yamaha WorldSBK and sponsor branding on chest, arm and back

## Jonathan Rea Cap Adult

**Part No.** B24-REA03-E0-00

Essential for sunny race days, the Jonathan Rea Adults Cap is a must-have accessory for fans of the 6-time Champion. 100% organic cotton in Paddock Blue, the unisex cap features a curved black peak, mesh back, adjustable strap and ventilation holes for day-long comfort. The look is completed with an embroidered '65' on the front and 'JR' on the side. Printed Yamaha logos on finish off the detailing that every Jonny fan needs in their collection!

- 100% cotton
- Adjustable strap
- Embroidered '65' and JR logo
- Ventilation holes
- Printed and 3D Yamaha Racing and sponsor logos
- Unisex adult, one-size-fits-all

NEW





## MX Collection

The 2024 MX Collection sees Yamaha collaborate for a second consecutive year with the iconic Alpinestars, legends in motocross apparel. Brand-new and stunning in shades of blue and white, the MX Collection has been designed in-line with the latest thrilling Yamaha MX bikes to offer functionality, protection, and style to help you own the track. With men's and kid's-sized apparel, going full throttle through the mud has never looked this good.

NEW



## MX Men's Jacket and Bodywarmer

**Part No.** A24-PJ310-E0 **XX**

**SIZE:** 1S-0S-0M-0L-1L-2L

Multi-functional and highly adaptable, the MX Men's Jacket and Bodywarmer makes an ideal item for long days outdoors tearing up the mud. Featuring a 2 in 1 jacket and bodywarmer combo, detachable sleeves with additional stretch panels and elbow protection give you complete freedom to dress to conditions. Zip air vents, adjustable cuffs and slim microfibre collar ensure constant comfort, with standout Yamaha and Alpinestars branding for a classic MX racer look.

- Zip air vents
- Elbow PU film reinforcement
- Slim collar construction with microfiber comfort lining
- Stretch panel on forearms
- 2 in 1, jacket and bodywarmer
- Yamaha and Alpinestars branding

## MX Men's Jersey

**Part No.** A24-RT113-E0 **XX**

**SIZE:** 1S-0S-0M-0L-1L-2L

An essential of any MX rider's wardrobe, the MX Men's Jersey is a lightweight and flexible must-have for your days in the dirt. A moisture wicking blend of polyester and elastane ensures constant comfort in all conditions, with mesh inserts for extra air flow and ventilation. Ergonomic sleeves with stretch cuffs give you an optimum riding position, with a seamless taped neck for effortless movement. Sublimated Yamaha, Alpinestars and GYTR branding completes a classic motocross look.

- Mesh inserts for airflow and ventilation
- Ergonomic raglan sleeves with stretch wrist cuffs
- Tape welded seamless neck opening
- Moisture wicking knitted fabric
- Sublimated Yamaha, Alpinestars and GYTR branding

NEW





NEW



## MX Men's Pants

**Part No.** A24-RP107-E0 **XX**

**SIZE:** 28-30-32-34-36-38

Optimised and technically detailed for relentless MX racing, the MX Men's Pants are hard-wearing and perfect for cutting through the ruts. A lightweight, multi-panel construction gives good protection while allowing freedom of movement, with high abrasion fabric on the seat. An adjustable waist with silicon grip allows the pants to fit all riders comfortably when they get their legs down. Sublimated Yamaha, Alpinestars and GYTR branding ensures an iconic MX racer look.

- 75% elastane, 14% polyamide, 6% elastane, 5% goat leather,
- 3D-modelled knee shape construction for comfort during riding
- Adjustable waist with silicon print for better fit
- Yamaha, Alpinestars and GYTR branding
- 4-way stretch main fabric for extra freedom of performance

## MX Men's Gloves

**Part No.** A24-RG105-E0 **XX**

**SIZE:** 1S-0S-0M-0L-1L-2L

Engineered for comfort, protection and ventilation, the MX Men's Gloves offer maximum control of your bike. A triple fabric blend features breathable stretch material, with a synthetic padded palm for grip and abrasion. A neoprene and thermoplastic rubber combination on the knuckles offer strong impact protection, with adjustable wrists for refining comfort when the track ruts up.

- Sublimated Yamaha and Alpinestars branding
- 84% polyamide, 14% polyurethane, 2% elastane
- Breathable stretch fabric
- Ergonomic wrist adjustments for secure fit and bike control
- Ergonomic synthetic padded palm for durability and grip
- Neoprene and TPR (thermoplastic rubber) knuckle protection

NEW



NEW



*No	Size
0L	L
0M	M
0S	XS - S
1L	XL - XXL

## MX Adult Body Armour

**Part No.** A24-PR310-E1 **XX**

**SIZE:** 0S-0M-0L-1L

A must-have in extra racing safety, the MX Adult Body Armour is a technical and reassuring item for every racer. Built with protection and flexibility in mind, this upper armour covers the shoulders, elbows and back with impact-absorbing shells on top of a lightweight and breathable stretch undershirt. Adjustable all over for comfort, the armour fits perfectly with the MX Men's Jersey to keep the racing look and heighten protection.

- Adjustable and removable back protector
- Divided back protector CE EN 1621: 2012 level 1
- Chest protector CE EN 1621: 2012 level 2
- Shoulder and Elbow protectors CE EN 1621:20212 level 1
- Lateral adjustment and kidney belt
- Durable elastane stretch mesh
- Special shell structure to absorb impacts

## MX Adult Socks

**Part No.** B24-HF105-E8 **XX**

**SIZE:** 0S-0M-0L

Designed for pure performance, the MX Adult Socks offer superior comfort and ventilation to help you stay focused on the racing. A combination of mesh layering and ribbing allows both breathability and flexion, with durable materials allowing regular use on track.

- Yamaha Racing branding
- 40% Polyamide, 35% Polypropylene, 20% Polyester, 5% Elastane
- Rib construction for enhanced stretch
- Available in three sizes
- Mesh layers for ventilation and comfort

NEW



*No	Size
0L	44 - 47 shoe size
0M	41 - 43,5 shoe size
0S	38 - 40,5 shoe size

NEW

*No	Age	Size
10	5-6 years	116cm
12	7-8 years	128cm
14	9-10 years	140cm
16	11-12 years	152cm
17	12-13 years	158cm



## MX Kid's Jersey

**Part No.** A24-RT413-E0 **XX**

**SIZE:** 10-12-14-16-17

Specially designed by Alpinestars to help MX riders of the future race in comfort, the MX Kid's Jersey offers excellent freedom of movement and coverage. 100% polyester construction helps with moisture wicking and allows plenty of stretch, with a sport collar for ample head movement. Sublimated Yamaha and Alpinestars branding gives the kids a look they'll love to race in.

- Longer cut in the rear for better coverage
- Sport collar neck construction
- Moisture wicking knitted poly fabric with stretch
- 100% polyester
- Fitted wrist cuffs
- Sublimated Yamaha and Alpinestars branding

## MX Kid's Pants

**Part No.** A24-RP407-E0 **XX**

**SIZE:** 10-12-14-16-17

Essential for junior riders, the MX Kid's Pants are technical, highly functional and protective. A mix of polyester and goat leather on the outer pants offers excellent protection without compromising leg movement, with stretch fabric on the seat, knees and waist for extra movement. Ventilated mesh on the lower legs allows breathability in the heat of action, while the goat leather inner knees offer heat resistance and grip. An adjustable and grippy waistband ensures a secure fit.

- Lower legs ventilated mesh for comfort
- Waist adjustment for better fit
- Lower waist stretch panels
- Stretch fabric for comfort at crotch, knees and inner waist
- Lining: 85% polyester, 15% polyamide
- 96% polyester

NEW



*No	Age	Size
10	5-6 years	116cm
12	7-8 years	128cm
14	9-10 years	140cm
16	11-12 years	152cm
17	12-13 years	158cm

**NEW**

*No	Age	Size
10	5-6 years	116cm
12	7-8 years	128cm
14	9-10 years	140cm
16	11-12 years	152cm
17	12-13 years	158cm



## MX Kid's Gloves

**Part No.** A24-RG405-E0 **xx**  
**SIZE:** 10-12-14-16-17

An essential part of a young MX riders kit, the MX Kid's Gloves allow full control of their bike with a combination of comfort and protection. Breathable stretch fabric offers all over ventilation, while the padded palm delivers grip and extra surface abrasion in a fall. The knuckles feature neoprene and thermoplastic rubber for impact protection, and adjustable wrists allow a comfort fit for all sizes.

- Breathable stretch fabric
- Ergonomic wrist adjustments for secure fit and bike control
- Neoprene and TPR (thermoplastic rubber) knuckle protection
- Sublimated Yamaha and Alpinestars branding

## MX Kid's Body Armour

**Part No.** A24-PR411-E1 **xx**  
**SIZE:** 12-14

Ideal for young riders getting to grips with their bike on track, the MX Kid's Body Armour offers superior and lightweight chest and back protection. Impact absorbing polymer shells are mated to a flexible jersey undershirt, allowing full range of movement without compromising safety. The front and back shells are perforated for ventilation, with a naturally contoured back shell to follow the spine.

- Shoulder and elbow CE EN 1621-2012 level 1
- Front side CE EN 1621-2012 level 1
- Backside CE EN 1621-2012 level 2
- Lightweight jacket with durable elastane stretch mesh
- Shells made of high-end, impact absorbing polymeric blends
- Kidney belt to lighten the back protector

**NEW**



*No	Age	Size
12	6 - 10 years	116 -140cm
14	10 - 14 years	140cm-158cm

NEW



## MX Kid's Socks

**Part No.** B24-HF605-E8-00

Young motocross riders will love the look and comfort of the MX Kid's Socks. Hard-wearing mesh layers allow ventilation and comfort, with ribbing for range of movement in the thick of a race. A simple but eye-catching staple of a new rider's MX kit bag.

- Mesh layers for ventilation and comfort
- Rib construction for enhanced stretch
- One size, suitable for 34-38
- 40% Polyamide, 35% Polypropylene, 20% Polyester, 5% Elastane
- Yamaha Racing branding





## Sports Heritage Collection

Inspired by Yamaha's beloved Sport Heritage XSR range, the Sports Heritage Collection pays tribute to a rich heritage of neo-retro motorcycles that capture the spirit of Yamaha racing legends. With a range of premium casual and riding apparel in striking tones of burnt orange, white, black and khaki, the Sports Heritage lineup offers a slick, vintage wardrobe crafted with contemporary materials and techniques. Designed for everyday use, the Sports Heritage Collection is apparel full of classic Yamaha styling.

NEW



## Sports Heritage Unisex Hoodie

**Part No.** B24-FS420-W3 **XX**

**SIZE:** 1S-0S-0M-0L-1L-2L-3L

With a striking, faded look in retro burnt orange and white, the Sports Heritage Unisex Hoodie is perfect for casual wear to show your Sport Heritage pride. Made from a cotton and polyester blend, this hoodie features a lined hood with knotted cords, with eye-catching red Yamaha and Sports Heritage badges on the chest, back and arm. An elastic hem and cuffs ensure a good fit for all.

- 80% cotton, 20% polyester, 320 French Terry
- Felt Yamaha branding on back
- Lined hood with sturdy knotted cords
- Yamaha badge on chest
- Sports Heritage badge on shoulder
- Elastic hem and cuffs
- Yamaha badge on chest

## Sports Heritage Men's T-Shirt

**Part No.** B24-FS110-W3 **XX**

**SIZE:** 1S-0S-0M-0L-1L-2L-3L

An iconic and colourful essential for XSR fans, the Sports Heritage Men's T-Shirt delivers a relaxed fit in burnt orange and white. An enzyme finish gives this cotton and elastane tee a retro faded look, with Yamaha and Sports Heritage badges on the chest and sleeve combining with a Yamaha print on the back for an all-round, classic look.

- 95% cotton, 5% elastane single jersey, 180 grams
- Yamaha embroidered badge on chest
- Soft enzyme finish for faded look
- Sports Heritage embroidered badge at sleeve
- Flock print Yamaha on back
- Ribbed crew neck
- Relaxed fit

NEW



NEW



## Sports Heritage Women's T-Shirt

**Part No.** B24-5FS21-W3 **xx**

**SIZE:** 1S-0S-0M-0L-1L-2L

A must-have for Yamaha's Sport Heritage fans, the Sports Heritage Women's T-Shirt is a striking and cool piece of vintage-style apparel. Made from cotton and elastane with a faded look in classic burnt orange and white, this V-neck tee features Sports Heritage badges on the sleeves and a Yamaha print on the chest. A casual, easy wearing item for every day style.

- Sports Heritage embroidered badges on sleeves
- Soft enzyme finish for faded look
- 95% cotton, 5% elastane single jersey, 180 grams
- Flock print Yamaha on chest
- Ribbed V-neck

## Sports Heritage Adult Cap

**Part No.** B24-FS430-W3-00

Protect yourself from the sun in style with the Sports Heritage Adult Cap. Made from 100% cotton, this unisex, one-size-fits-all cap features a retro burnt orange and white design. Yamaha and Sports Heritage badges on the front and side give an iconic look, with an adjustable strap and breathing holes for comfort.

- Embroidered Sports Heritage badge at side
- Colour block design on peak and side
- Embroidered Yamaha badge at front
- Breathing holes for ventilation
- 100% Cotton
- Adjustable plastic strap

NEW



NEW



## Sports Heritage Men's Retro Riding Jacket

**Part No.** A24-PJ101-C3 **XX**

**SIZE:** 0S-0M-0L-1L-2L

A stunning piece of retro-inspired Yamaha riding gear, the Sports Heritage Men's Riding Jacket is striking in burnt orange and white. Made from 100% buffalo leather with a cotton lining, this jacket offers Sport Heritage riders style and safety, with removable Warrior elbow and shoulder protection. Outer and inner pockets allow room for essential items, with stitched Yamaha branding capturing the essence of the Sport Heritage range's past.

- Lining 100% cotton
- Stitched Yamaha branding
- 2 outside pockets and 1 inside pocket
- Back protector pocket for Spidi Warrior male back protector
- Full-length zip
- 100% buffalo leather

## Faster Sons XSR Keyring

**Part No.** N24-PK003-C1-00

Whether you ride them or just love them, the Faster Sons XSR Keyring is made for the XSR fan. An icon of Yamaha Sport Heritage, the retro cutting-edge XSR models are timeless classics that this keyring pays homage to. A 2D XSR keyring in PVC is attached to a metal keychain for a useful novelty that keeps keys attached with a Faster Sons flair.

- PVC and metal keychain
- 2D Faster Sons XSR

NEW





## Faster Sons Crewneck Sweatshirt Men

**Part No.** B23-FS101-E0 **XX**

**SIZE:** 1S-0S-0M-0L-1L-2L-3L

Simple yet striking, the Faster Sons crewneck sweatshirt for men is constructed with an incredibly soft organic and recycled fabric blend. Its racing blue body features a central Yamaha logo print, with heritage stripes on the left shoulder that recall Yamaha Racing history, and embrace the new Sport Heritage XSR range. A comfort fit and worn-out effect make this a luxurious retro-styled garment for the everyday.

- Self-fabric bottom hem and cuffs
- French Terry fabric, 330 grams
- 70% organic cotton, 30% recycled polyester
- Soft wash worn-out effect
- Printed Yamaha branding on chest and left shoulder
- Comfort Fit
- Crewneck design
- Faster Sons logo patch on right sleeve

## Faster Sons Zip Hoodie Men

**Part No.** B23-FS102-E1 **XX**

**SIZE:** 1S-0S-0M-0L-1L-2L-3L

Produced with an organic and recycled fabric blend, the Faster Sons zip hoodie for men is a bold, statement item for regular use. An organic cotton/ recycled polyester blend, it features a racing blue body with black sleeves, with a lined hood and long cuffs helping you stay warm. A striking light blue speed block design runs the width of the chest, arms and around the back for an encompassing look with nods to classic Yamaha Racing and the new Sport Heritage XSR range.

- Self-fabric bottom hem and cuffs
- French Terry fabric, 330 grams
- 70% organic cotton, 30% recycled polyester
- Soft wash worn-out effect
- Printed Yamaha branding on chest and left shoulder
- Comfort Fit
- Crewneck design
- Faster Sons logo patch on right sleeve







## Faster Sons Speed Block T-Shirt Men

**Part No.** B23-FS112-W4 **XX**

**SIZE:** 1S-0S-0M-0L-1L-2L-3L

A hallmark for Sport Heritage fans, the Faster Sons speed block t-shirt for men is a detailed item that demands attention. White with contrasting black arms, its organic cotton and elastane blend ensures a soft feel with a striking look. Yamaha branding on the chest is highlighted by light blue speed blocks and heritage stripes, with colour contrast blue neckline and sleeves capturing the vintage Sport Heritage look. Its comfort fit makes this t-shirt perfect for use anywhere, any time.

- 95% organic cotton, 5% elastane, 180 grams jersey
- Faster Sons logo patch on right sleeve
- Comfort fit
- Printed Yamaha branding on chest and left shoulder
- Soft wash worn out effect

## Faster Sons Heritage T-Shirt Men

**Part No.** B23-FS113-E0 **XX**

**SIZE:** 1S-0S-0M-0L-1L-2L-3L

Cleanly designed and iconic, the Faster Sons heritage t-shirt for men has clear Sport Heritage DNA in it. A racing blue body constructed from an organic cotton and elastane blend features strong Yamaha branding on the chest, with stripes on the left shoulder giving movement to the look. A black contrast neckline focuses attention on the chest, while a comfort fit cut makes it perfect for regular wear.

- Soft wash worn out effect
- 95% organic cotton, 5% elastane, 180 grams jersey
- Printed Yamaha and heritage stripes on front
- Comfort fit
- Faster Sons logo patch on right sleeve





## Faster Sons Zip Hoodie Women

**Part No.** B23-FS202-B4 **XX**

**SIZE:** 1S-0S-0M-0L-1L-2L

Made from extremely soft and comfortable French Terry, the Faster Sons zip hoodie for women has Sport Heritage XSR spirit in every detail. Crafted with an organic and recycled fabric blend, the hoodie has a black body with contrasting blue arms and hood. A white speed block graphic in the centre of the chest is highlighted with heritage stripes and Yamaha branding. A lined hood and long cuffs provide extra comfort, with front pockets for essentials.

- Faster Sons logo patch on right sleeve
- Full-length zip
- Self-fabric bottom hem and cuffs
- Comfort Fit, two front pockets
- French Terry fabric, 350 grams
- Printed speed block graphic and Yamaha branding on chest
- Hood with tunnel and cord
- 70% organic cotton, 30% recycled polyester
- Soft wash worn out effect

## Faster Sons Speed Block T-Shirt Women

**Part No.** B23-FS212-W4 **XX**

**SIZE:** 1S-0S-0M-0L-1L-2L

A bold and colourful display of Yamaha Sport Heritage, the Faster Sons speed block t-shirt for women is an eye-catching piece for everyday wear. A blend of organic cotton and elastane afford comfort and mobility, with a white body featuring a racing blue speed block graphic, heritage stripes and Yamaha branding on the chest. Colour contrast black sleeves and light blue V-neck create a standout vintage look that fits in perfectly with the XSR range.

- 95% organic cotton, 5% elastane, 180 grams jersey
- Soft wash worn out effect
- Printed speed block graphic and Yamaha branding on chest
- Faster Sons logo patch on right sleeve
- Contrast colour V-neck and sleeves





### Faster Sons Beanie

**Part No.** N23-PA301-B5-00

A simple yet bold design, the Faster Sons Beanie is a standout one-size-fits-all black hat, ideal for road trips and spending time in the great outdoors. Blue and yellow stripes run around the beanie, with Yamaha and Faster Sons branding identifying its undeniable Faster Sons heritage.

- 60% recycled polyester, 40% acrylic
- Black with blue and yellow heritage stripes
- One size fits all

### Faster Sons Neck Tube - Blue

**Part No.** N23-FS006-E0-00

A pure vintage design that's right at home among the Sport Heritage XSR range, the Faster Sons neck tube in blue and black is perfect for touring and outdoor use. Polyester construction creates a soft touch, while the design is brought to life with iconic speed blocks, heritage stripes and Yamaha branding. An ideal accompanying garment for the Faster Sons range.

- 100% polyester soft touch
- Speed block graphic and heritage stripes
- Protects against wind, cold and dust
- Refined Yamaha branding
- One size fits all





## Faster Sons Neck Tube - Black

**Part No.** N23-FS006-B0-00

A pure vintage design that's right at home among the Sport Heritage XSR range, the Faster Sons neck tube in blue and black is perfect for touring and outdoor use. Polyester construction creates a soft touch, while the design is brought to life with iconic speed blocks, heritage stripes and Yamaha branding. An ideal accompanying garment for the Faster Sons range.

- 100% polyester soft touch
- Speed block graphic and heritage stripes
- Protects against wind, cold and dust
- Refined Yamaha branding
- One size fits all



## Hyper Naked Collection

Like the powerful, street-focused MT bikes it is based on, the Hyper Naked Collection is the embodiment of The Dark Side of Japan (DSOJ). This collection fuses urban fashion with the torquey agility of Yamaha's MT motorcycles and Japanese ambience, creating a range of retro futuristic garments that belong to the night but fit in for everyday wear. Shades of black, cyan and grey form slimming silhouettes that capture attention and dominate contemporary urban wear.





## Hyper Naked Hoodie Men

**Part No.** B23-MT111-B0 **XX**

**SIZE:** 1S-0S-0M-0L-1L-2L-3L

Ready for the streets, the Hyper Naked hoodie for men is presented in stealth black with stunning cyan highlights in sync with the new MT machines. Constructed in an organic cotton and recycled polyester blend for maximum comfort, this hoodie features a large front panel printed with the iconic MT logo. Faded blue graphics give motion to the silhouette, with 3D DSOJ logos on the inner sleeve and side. A lined hood gives weather protection and a kangaroo pocket offers room for essentials.

- 70% organic cotton, 30% recycled polyester
- Front panel with MT logo outline
- Faded sleeve graphics
- 3D DSOJ logo on right side
- 3D DSOJ embroidered on left inner sleeve
- Lined hood
- Kangaroo front pocket

## Hyper Naked T-Shirt Men

**Part No.** B23-MT101-B0 **XX**

**SIZE:** 1S-0S-0M-0L-1L-2L-3L

Dark, edgy and intricately detailed, the Hyper Naked t-shirt for men is a must-have for joining the dark side. Constructed from an organic cotton and elastane blend for softness and mobility, its stealth black cut features a front panel with a bold printed MT logo. The sleeves are highlighted with cyan hem stripes and faded shoulder graphics, while Yamaha branding features on the left shoulder. DSOJ sleeve and side logos finish the gritty urban look.

- 95% organic cotton, 5% elastane
- Front panel with MT logo outline
- Faded shoulder graphics
- Yamaha branding on left shoulder
- Embroidered DSOJ logo on left side
- 3D DSOJ logo print on right sleeve





## Hyper Naked Sweater Women

**Part No.** B23-MT211-B0 **XX**

**SIZE:** 1S-0S-0M-0L-1L-2L

Elegantly simple and striking, the Hyper Naked sweater for women is a stealth black and cyan statement piece. An organic cotton and recycled polyester construction deliver comfort and mobility, with a dominant front panel with printed MT logo commanding attention. Faded blue shoulder graphics give the sweater's silhouette motion, with 3D DSOJ logos on the inner sleeve and side capture the essence of the MT range. Zip front pockets give room for essentials while long cuffs provide extra warmth.

- 70% organic cotton, 30% recycled polyester, 330 grams
- Front panel with MT logo
- Faded shoulder graphics
- 3D DSOJ logo print on left side
- Embroidered DSOJ logo right inner sleeve
- Two zip pockets

## Hyper Naked T-Shirt Women

**Part No.** B23-MT201-B0 **XX**

**SIZE:** 1S-0S-0M-0L-1L-2L

Efficiently designed to embrace the dark side, the Hyper Naked t-shirt for women is an instant icon for the MT range. Its organic cotton and elastane blend gives a soft feel with mobility, with the staple front panel and printed MT logo a clear eye-catcher. Faded cyan graphics on the shoulder give extra movement to the design. Yamaha branding on the shoulder and 3D DSOJ logos on the side cement this as a must-have for urban life.

- 95% organic cotton, 5% elastane
- Front panel with MT logo
- Yamaha branding on left shoulder
- Faded shoulder graphics
- Embroidered DSOJ logo on left and right sides



## Hyper Naked Neck Tube

**Part No.** N23-MT006-B0-00

The perfect accompaniment to the full apparel range, the Hyper Naked neck tube is a highly adaptable item for street riding and outdoor exploration. Stealth black fading into cyan, its polyester construction means a very soft feel that keeps out the elements. A sublimated MT logo and Yamaha branding create an urban look that is all dark side.

- 100% polyester
- MT, DSOJ and Yamaha branding
- Multifunctional





## Ténéré Collection

Designed with the relentless spirit of Yamaha's toughest bike and the harsh environments it was built for, the Ténéré 700 World Raid Collection captures the look and feel of tackling adventure head-on. Created as a capsule for rally fans, the collection is modular and adaptable for all weather, affording precision technical detailing combined with comfort. Its rugged design approach is matched only by the bike that gave its name to it, resulting in a Yamaha collection that is as timeless as it is contemporary.



## Ténéré 700 World Raid Sweater Men

**Part No.** B23-TE105-D1 **XX**

**SIZE:** 1S-0S-0M-0L-1L-2L-3L

Lightweight but rugged, the Ténéré sweater is a second layer combining brown, grey and racing blue tones to capture the essence of desert exploration. 100% recycled fabric, shaped hem and a concealed zip maintain a shapely silhouette, with a tight fitted hood, keeping the elements out. A contrast Ténéré logo and graphic on the chest complete its adventurous identity as a Ténéré 700 descendent.

- 100% recycled polyester
- Lightweight bonded fabric
- Concealed zip pocket on front side
- Tight fitted hood with binding
- Contrast fabric on chest with printed logo
- Sunglass loop besides chest pocket
- Shaped hem

## Ténéré 700 World Raid Bodywarmer Men

**Part No.** B23-TE106-D3 **XX**

**SIZE:** 1S-0S-0M-0L-1L-2L-3L

Reversible and ideal for combined wear with sweaters or t-shirts, the Ténéré bodywarmer for men is the essence of adaptability. Made from 100% lightweight recycled nylon it can be packed into a waist bag. Integrated zip pockets give room for essentials. A shaped hem gives a fashion twist, with a padded chest and upper back for incredible comfort. A reflective back stripe is highlighted with a sublimated Ténéré logo at the chest for unmistakable identity.

- Fully reversible
- Padded chest front and back
- Chest pocket with concealed zip
- Sunglass loop besides chest pocket
- Integrated zip pocket in side seams
- Shaped hem with reflective stripe on back
- Bodywarmer is packable in a waist bag option







## Ténéré 700 World Raid Long Sleeve T-Shirt Men

**Part No.** B23-TE102-D1 **XX**

**SIZE:** 1S-0S-0M-0L-1L-2L-3L

Lightweight and breathable, the Ténéré long sleeve t-shirt for men benefits from an integrated buff inspired by desert adventures. A blend of organic cotton and viscose ensures maximum comfort, with Raglan sleeves for easy movement. A concealed zip chest pocket gives room for essentials, with a bold Ténéré logo print tying together the t-shirts racing blue highlights. A reflective stripe and 3D Yamaha logo on the back complete this rugged explorer's garment.

- 50% viscose, 50% organic cotton
- Integrated buff with breathing holes
- Chest pocket with concealed zip
- Raglan sleeve
- 3D Yamaha branding on back
- Reflective stripe on back hem
- Sunglass loop besides chest pocket

## Ténéré 700 World Raid Travel T-Shirt Men

**Part No.** B23-TE103-D0 **XX**

**SIZE:** 1S-0S-0M-0L-1L-2L-3L

Ventilated and adaptable for everyday wear, the Ténéré travel t-shirt for men is a premium garment constructed in a highly comfortable blend of organic cotton and viscose. A racing blue ribbed collar is a standout feature, highlighted with a convenient chest zip pocket and printed Ténéré logo patch. A classic reflective strip and 3D Yamaha logo on the back bring this clean and highly functional design together.

- 50% viscose, 50% organic cotton, 180 grams
- Ribbed collar
- Woven nylon fabric chest pocket with concealed zip
- Sunglass loop besides chest pocket
- Ténéré World Raid logo on chest pocket
- Reflective stripe on back hem
- 3D Yamaha branding on backside neck





## Ténéré 700 World Raid Neck Tube

**Part No.** N23-TE006-D0-00

A reversible and multifunctional item, the Ténéré neck tube is ideal for outdoor and adventure use. Polyester construction gives it a very soft touch, with iconic Ténéré colours on both sides ensuring a rugged, stylish look.

- Double layered and printed on both sides
- 100% polyester soft touch
- Multifunctional





## Riding Gear

Whatever the season and wherever the journey takes you, there is no substitute for equipping yourself with supreme riding gear. In the decades since Yamaha Motor's story began in 1955, the same exquisite detail and innovation that goes into its motorcycles has been applied to its riding gear, offering sublime pieces that rev your heart and help keep you safe on the road. Engineered for protection, durability and style, the Riding Gear Collection is your first and best stop to dress for the road ahead.

NEW



## Paddock Blue Men's Riding Softshell

**Part No.** A24-JJ102-E0 **XX**

**SIZE:** 0S-0M-0L-1L-2L

Specially designed for Paddock Blue fans that love to ride, the two-tone blue Paddock Blue Men's Riding Softshell offers 2-in-1 functionality for comfort on the road. Under the softshell outer with protection pockets and hydro repellent treatment sits a removable armoured riding mesh, featuring Warrior Lite armour on the elbows and shoulders. A fixed hood with snap closure prevents it flapping on the move, while two outer pockets and one inner pocket give ample room for essential items. A Paddock Blue classic for use on two wheels.

- 100% polyester mesh for inner harness
- Elastic jersey wrist with thumbhole
- 96% polyester, 4% elastane softshell fabric
- CE EN 17092-4:2022 class A
- Hydro repellent treatment on softshell surface
- Snap fixed hood to avoid movement during riding
- Back protector pocket for Spidi Warrior male back protector
- 2 in 1 jacket: Base 1 – removable armoured riding mesh. Base 2 - softshell with pockets for protectors
- Two outer pockets and one inner pocket on detachable base 1 Armor
- Warrior Lite level 1 for elbow and shoulders on detachable base 1 armour
- Optional back protector: Spidi Warrior men's back protector



NEW



## Paddock Blue Women's Riding Softshell

**Part No.** A24-JJ202-E0 **XX**

**SIZE:** 1S-0S-0M-0L-1L-2L

Technical and stylish for Paddock Blue fans that ride, the blue and black Paddock Blue Women's Riding Softshell offers 2-in-1 functionality for comfort on all roads. A softshell outer with protection pockets and hydro repellent treatment covers the removable armoured riding mesh, featuring Warrior Lite armour for the elbows and shoulders. A fixed hood with snap closure prevents it from moving during the ride, while two outer pockets and one inner pocket give ample room for essential items. A Paddock Blue classic for regular use on two wheels in all weathers.

- Light brushed inner
- Full-length zip
- Lined hood with draw cord
- Embroidered Yamaha Racing branding
- Retro-style pattern tape on sleeves and shoulder
- 80% cotton, 20% polyester, French Terry finish, 380 grams
- Ribbed hem and elastic cuffs
- 100% polyester mesh for inner harness
- 2 in 1 jacket: Base 1 – removable armoured riding mesh. Base 2 - softshell with pockets for protectors
- Warrior Lite level 1 for elbow and shoulders on detachable base 1 armour
- Two outer pockets and one inner pocket on detachable base 1 Armor







## Leather Racesuit Model 2022

**Part No.** A22-BG121-E0 **XX**

**SIZE:** 0S-0M-0L-1L-2L-3L

Yamaha's 1-piece race suit is designed to give you all of the movement and flexibility you need when you're constantly shifting weight for cornering, braking and accelerating. Manufactured from cowhide that's reinforced with aramid fibres offering both strength and maximum flexibility. Featuring elbow sliders and removable knee sliders. The design offers plenty of ventilation that keeps you cool under pressure.

- CE EU regulation 2016 / 425 PPE
- Cow hide reinforced with aramid fibers
- 78% polyamide, 14% aramid, 8% elastan
- Removable mesh lining
- 100% polyester racing collar with neck roll
- Sleek external shells on shoulder
- Fitted cut at hip area
- Flex leather at the knees, sides and back
- Aramid fibers in legs and sleeves
- Micro perforated leather at stomach area
- Zipped calves
- Aerodynamic hollow hump

## Leather Racing Gloves Men

**Part No.** A22-BS121-B4 **XX**

**SIZE:** 0S-0M-0L-1L-2L-3L

Yamaha's high performance ventilated racing gloves are manufactured with high quality cowhide leather to give you a high level of protection and comfort. Features include tough knuckle protectors, Kevlar lining and an anti-twist system for the little finger, as well as Aramid between the fingers.

- Ventilated knuckle protector
- Inner lining in cotton and aramid fibers from Dupont Kevlar
- Aramid between fingers
- Anti-twist system for little finger
- Flex leather on fingers



NEW



## Sports Heritage Men's Riding Jacket

**Part No.** A24-PJ100-B0 **XX**

**SIZE:** 0S-0M-0L-1L-2L

An essential part of a Sport Heritage rider's wardrobe, the Sports Heritage Men's Riding Jacket is a classic piece of stylish, retro-inspired apparel straight from the 70s. Constructed from 100% buffalo leather in black with a printed cotton lining, this jacket provides safety with removable Warrior elbow and shoulder protection. Zipped outer and inner pockets allow room for personal items, with stitched Yamaha and Sports Heritage badges giving a beautiful finishing touch to this iconic jacket.

- Cotton lining with printed design
- Stitched Sports Heritage and Yamaha badges
- 2 outside pockets and 1 inside pocket
- Back protector pocket for Spidi Warrior male back protector
- 100% buffalo leather



NEW



## Sports Heritage Men's Riding Cargo Pants - Kaki

**Part No.** A24-PP102-G2 **XX**

**SIZE:** 0S-0M-0L-1L-2L

A stylish and effortless match for your Yamaha riding jackets, the Sports Heritage Men's Riding Cargo Pants offer great versatility and comfort on and off the road. Made from hard-wearing but flexible cordura fabric in either khaki or black slim fit, the pants include adjustable Warrior knee protection for extra peace of mind. Pockets on the side, top and rear give ample room for belongings. Ideal for Sport Heritage riders looking for that extra riding flair.

- Removable Warrior Lite Level 1 protection for knees – hip protection optional
- 100% Polyamide cordura fabric
- Adjustable knee protectors

## Sports Heritage Men's Riding Cargo Pants - Black

**Part No.** A24-PP102-B1 **XX**

**SIZE:** 0S-0M-0L-1L-2L

A stylish and effortless match for your Yamaha riding jackets, the Sports Heritage Men's Riding Cargo Pants offer great versatility and comfort on and off the road. Made from hard-wearing but flexible cordura fabric in either khaki or black slim fit, the pants include adjustable Warrior knee protection for extra peace of mind. Pockets on the side, top and rear give ample room for belongings. Ideal for Sport Heritage riders looking for that extra riding flair.

- Available in khaki or black
- Slim fit
- 2 top pockets, 2 leg pockets, 2 back pockets



NEW



## Sport Touring Riding Jacket Women

**Part No.** A22-SJ201-B0 **XX**

**SIZE:** 1S-0S-0M-0L-1L-2L

Designed exclusively for female riders, the nylon/polyester riding jacket and pants are the ideal sport touring gear. The jacket and pants have a minimalistic design, and feature a removable thermal lining and fixed waterproof lining. This set of sport touring riding gear gives you the comfort and flexibility you need to enjoy every ride, whatever the weather.

- CE level AA jacket
- 90% polyester, 10% polyamide nylon Taslan
- 100% polyester lining
- Removable thermal lining, fixed waterproof lining
- CE level shoulder and elbow protectors
- 3 outside pockets
- 3 inner pockets
- Invisible biceps adjusters



## Sport Touring Pants Women

**Part No.** A22-SP201-B0 **XX**

**SIZE:** 1S-0S-0M-0L-1L-2L

- CE level AA pants
- Designed as a set with riding jacket
- 90% polyester, 10% polyamide main fabric
- 100% polyester lining
- Removable thermal lining, fixed waterproof lining
- CE level hip and knee protectors
- 2 zippered pockets



## Hyper Naked Riding Hoodie Men

**Part No.** A22-MT101-B0 **xx**

**SIZE:** 0S-0M-0L-1L-2L-3L

The Hyper Naked Riding hoodie is a softshell jacket with a removable down jacket lining and hood. Featuring a comfortable laminated mesh lining, 2 exterior and 2 interior pockets. The design matches the new 2021 color of the Hyper Naked motorcycles. A casual and lightweight softshell jacket for all fans of the Dark Side of Japan.

- Softshell fabric
- Laminated fixed mesh lining, removable down jacket lining
- Removable hood
- CE elbow and shoulder protectors
- Back protector with ventilation
- 2 outside pockets, 2 inside pockets
- Reflective logo on back



### Adventure Rally Jacket Men

**Part No.** A23-RJ101-E0 **XX**

**SIZE:** 0S-0M-0L-1L-2L-3L

This premium quality men's adventure riding jacket has all the features you need for long distance trips. There's plenty of capacity for your belongings with 6 external and 2 waterproof internal pocket. The removable membrane and ventilation areas keep you comfortable in all weathers. The jacket has a built-in hydration bag in the dedicated back pocket. The jacket is designed to match the Adventure Rally Pants.

- CE EN 17092-3 : 2020 LEVEL AA
- protectors in the outershell
- 3 layer jacket: outshell, Rain membrane and thermal liner
- rain layer is H2out, breathable from inside, waterproof from outside
- thermal lining with 100 grams wadding
- big front vents
- 1 small pocket on the sleeve
- water bladder inside
- 2 big vents at backside
- adjustable sleeve straps
- 6 external pockets, 2 waterproof, 2 internal pockets
- Spidi backprotector option



### Adventure Rally Pants Men

**Part No.** A22-RP101-E0 **XX**

**SIZE:** 0S-0M-0L-1L-2L-3L

Premium quality adventure riding pants designed to match the Adventure Rally Jacket. Manufactured from durable Oxford polyester for all weather comfort and protection, and featuring an in-boot design.

- 2 Outside pockets
- Yamaha Logos
- Integrated adjustment on waist
- Durable Oxford Polyester
- In boot construction





## Adventure Riding Jacket Men

**Part No.** A22-AD101-F2 **xx**

**SIZE:** 0S-0M-0L-1L-2L-3L

The Adventure riding jacket and pants are available as a set and zip together. Designed for long distance riding comfort with high level of protection. The set has removable thermal lining and fixed waterproof lining that give all-weather flexibility. The fabric is a mix of polyester, polyamide, polyurethane and nylon. The jacket has 6 exterior and 4 interior pockets. The pants have 2 cargo pockets. This Adventure set is built to handle the longest and toughest ride.

- CE level AA jacket
- Durable and lightweight
- Polyester/polyamide/polyurethane nylon mix
- CE level AA shoulder and elbow protectors
- Removable thermal lining
- Fixed waterproof lining
- 1 waterproof wallet pocket
- Neoprene collar with Velcro closure
- Biceps, waist and cuff adjusters
- Yamaha 3D logos
- Ventilation
- Reflective details
- Stretch soft shell polyester lining
- Zip connection to pants

## Adventure Riding Pants Men

**Part No.** A22-AP101-F2 **xx**

**SIZE:** 0S-0M-0L-1L-2L-3L

- CE level AA pants
- 90% polyester, 8% polyurethane, 2% polyamide nylon
- CE level AA removable thermal lining
- CE level hip protectors
- Reflective details
- Zipper calf adjusters

### Adventure Riding Jacket Women

**Part No.** A22-AD201-B1 **XX**

**SIZE:** 1S-0S-0M-0L-1L-2L

The Adventure riding jacket and pants are available as a set and zip together. Designed for long distance riding comfort with high level of protection. The set has removable thermal lining and fixed waterproof lining that give all-weather flexibility. The fabric is a mix of polyester, polyamide, polyurethane and nylon. The jacket has 6 exterior and 4 interior pockets. The pants have 2 cargo pockets. This suit is built to handle the longest and toughest ride.

- CE level AA jacket
- Durable and lightweight
- Polyester/polyamide/polyurethane nylon mix
- CE level AA shoulder and elbow protectors
- Removable thermal lining
- Fixed waterproof lining
- 1 waterproof wallet pocket
- Neoprene collar with Velcro closure
- Biceps, waist and cuff adjusters
- Yamaha 3D logos
- Reflective details
- Stretch soft shell polyester lining
- Zip connection to pants



### Adventure Pants Women

**Part No.** A22-AP201-B1 **XX**

**SIZE:** 1S-0S-0M-0L-1L-2L

- CE level AA pants
- 90% polyester, 8% polyurethane, 2% polyamide nylon
- CE level AA removable thermal lining
- CE level hip protectors
- Reflective details
- 2 cargo pockets



## ATV-Enduro Riding Jacket Men

**Part No.** A22-SJ101-F3 **xx**

**SIZE:** 0S-0M-0L-1L-2L-3L

Design for ATV, enduro and dirt riding, Yamaha's Off Road riding set is manufactured from 100% ripstop material for added durability. The jacket features removable sleeves, 2 waterproof inner pockets and 5 front pockets. The ventilated jacket offers excellent flexibility and carrying capacity. The pants feature 2 cargo pockets, with a zip and velcro adjustment.

- 100% polyester ripstop Dynax
- Removable sleeves
- Ventilated lining
- Fleece collar and cuffs for comfort
- Adjustable velcro cuffs
- 2 waterproof inner pockets
- 5 front pockets
- Double front closure with ventilation system

## ATV-Enduro Riding Pants Men

**Part No.** A22-SP101-F3 **xx**

**SIZE:** 0S-0M-0L-1L-2L-3L

- 100% polyester ripstop Dynax
- 2 waterproof cargo pockets
- Zip and velcro adjustments at bottom
- waist tightening system for perfect fit
- Zip ventilation
- Water resistant
- cordura stretch fabric at back



### Urban Riding Jacket Men

**Part No.** A22-UR101-F0 **XX**

**SIZE:** 0S-0M-0L-1L-2L-3L

Yamaha's stylish Urban riding jacket is ideal for city life, and feels just as good whether you're on or off your bike. The removable alu-thermo lining and laminated fixed mesh lining give all season comfort. Featuring 2 exterior and 2 interior pockets and a removable hood.

- EN 17092: 2020 class A
- Softshell
- Removable thermo-alu lining and laminated fixed mesh lining
- Removable hood
- 2 exterior and 2 interior pockets
- CE level shoulder and elbow protectors
- CE level back protector
- Omega ventilation system

### Urban Riding Jacket Women

**Part No.** A22-UR201-B0 **XX**

**SIZE:** 1S-0S-0M-0L-1L-2L

Featuring a removable hood and synthetic fur, this stylish padded jacket is a favourite with female riders who want a jacket that looks good in any situation. Comes with a waterproof membrane and 3D mesh lining.

- CE level EN 17092: 4 : 2020 class A
- Polyester padded with leather details
- Fixed 3D Mesh lining, waterproof membrane
- Removable hood and removable synthetic fur
- Padding 180 gms for isolation
- 4 exterior pockets and 1 interior pocket
- CE elbow and shoulder protectors
- Omega back pocket for CE back protector







## Rainwear Jacket Men

**Part No.** B22-NP300-B0 **xx**

**SIZE:** 0S-0M-0L-1L-2L-3L

Weatherproof rain jacket constructed from polyester with polyurethane coating. Featuring convenient outside pockets, this packable jacket incorporates reflective areas for safety. Matching pants available.

- 90% polyester, 10% coating polyurethane
- Weatherproof
- Reflective parts on front, sleeves and back
- Flap covered zipper
- Outside pockets
- Unisex design
- Packable



## Rainwear Pants Men

**Part No.** B22-NP301-B0 **xx**

**SIZE:** 0S-0M-0L-1L-2L-3L

Weatherproof unisex rain pants with reflective front and back areas. Featuring a comfortable elastic waistband and with handy adjustable straps, these packable pants are designed to be used with the matching rainwear jacket.

- 90% polyester, 10% coating polyurethane
- Weatherproof
- Reflective parts on front and back
- Elastic waistband
- Adjustable straps with Velcro
- Unisex design
- Packable



### Rainwear Suit Men

**Part No.** B22-NP302-B0 **XX**

**SIZE:** 0S-0M-0L-1L-2L-3L

These 1-piece rain overalls are made with 90% polyester and a 10% polyurethane coating that helps protect you from the weather. Featuring reflective areas on the front, sleeves and back, this packable unisex suit is designed to be worn over your riding gear.

- 90% polyester, 10% coating polyurethane
- Weatherproof
- Reflective parts on front, sleeves and back
- Flap covered zipper
- Elastic cuffs
- Unisex design





## Back protector Male (SPIDI)

**Part No.** A18-PR101-B0 -LX

**SIZE:** L/XL

The Yamaha-Spidi is a compact backprotector for male. CE certified for male jackets and for body height between 157 - 193 cm.

- Compact warrior code Z54-010
- 1 layer is stiff to spread the shock. The 2nd and 3rd are more soft, to reduce the transmission of energy to the body of the rider
- Flexible and light protector with multilayered materials
- Measurement : height 41 cm and length 33 cm
- Cubes shaping wiht soft inner surface shaped for air circulation

### Size chart

Size L/XL: for Men all jackets

#### Jackets where you can fit this Back protector

#### GENDER

A20FJ102B4XX	20 PB MALE RIDE SOFTSH HAMLETS	MEN
A21BJ107B0XX	21 MT MALE LEATHER JACK ULTRA	MEN
A20BJ105B0XX	21 SC JACK MALE SUMMER MAJUO	MEN
A21BJ104B0XX	21 SC JACK MALE WINTER CABO	MEN
A21BJ106B0XX	21 SC JACK MALE NET LIMA	MEN
A20FJ202B4XX	202 PB FEM RIDE SOFTSH POMPEI	MEN
A22RJ101E0XX	22 ADV MALE RALLY JACK ISIDRO	MEN
A19EJ101B7XX	19 MT MALE JACKET TEKST BOSTON	MEN
A24PJ100B0XX	24 FS LEATH JACKET MEN INA	MEN
A24PJ101C3XX	24 FS LEATH JACK MEN INARW	MEN
A24JJ102E0XX	24 PB RIDE SSHELL MEN RWAN	MEN
A23RJ101E0XX	23 ADV MALE RALLY JACKET DOIS	MEN

## Back Protector Level 1 (Trophy/Bering)

**Part No.** A22-TS300-Y0 **XX**

**SIZE:** S/M-XL

Adding safety to your riding jacket is easy with the Omega back protector. For the correct type of protector, please see the riding gear product details.

- OMEGA level 1
- PU Viscoelastic foam
- Impact-absorbing technology
- Ergonomic design
- 300 grams
- Temperature -10 till +40 degrees C
- Rigid shape with ventilation holes



### Size chart

Size S/M: for Men jackets from size XS to L and for Women jackets from size XS to XXL

Size XL: for Men jackets from size XL to XXXL

### Jackets where you can fit this Back protector

### GENDER

A22MT101B0XX	22 MT RIDE JACKET MEN BANGUI	MEN
A22UR101F0XX	22 UR MALE JACKET LISBON	MEN
A22UR201B0XX	22 UR FEM JACKET PHNOM	WOMEN
A23PJ011XXXX	23 FS RIDING SHIRT MEN VICENTE	MEN

## Back protector Level 2 (Trophy/Bering)

**Part No.** A21-PR300-B0 **XX**

**SIZE:** S-M-L

Flexible and breathable CE level 2 certified IXON back protector, providing high shock absorption. Adaptable to body and spine, due to its ergonomic design.

- High energy absorption capacity (<9kn)
- Supple shock-absorbing foam
- Honeycombed on inside for more lightness
- Body and spine ergonomic design
- Perforations for ventilation
- Flexible and comfortable
- Compatible with selected IXON jackets
- Soft material: Polyurethane
- CE level 2 certified
- Available in 3 sizes (S-M-L)



### Size chart

Size S: for Women jackets from size XS to S

Size M: for Women jackets from size M to XXL and Men jackets from size XS to L

Size L: for Men jackets from size XL to XXXL

### Jackets where you can fit this Back protector

Jackets where you can fit this Back protector		GENDER
A20BJ101B0XX	20 ADV MALE JACKET BAKU	MEN
A20BJ102B0XX	20 SPO MALE JACKET LUANDA	MEN
A20BJ103B0XX	20 FS MALE JACKET LEATH SOFIA	MEN
A21BJ102B7XX	21 RO JACK MALE PAZ	MEN
A21BJ101B0XX	21 RO JACK MALE THIMPU	MEN
A21BJ203B0XX	21 RO JACK FEM BANDAR	WOMEN
A22PB101E0XX	22 PB RIDE HOODY MEN KIGALI	MEN
A22PB201E0XX	22 PB RIDE HOODY WOMEN PURAL	WOMEN
A22AD101F2XX	22 ADV JACKET MEN CHAD	MEN
A22AD201B1XX	22 ADV JACKET WOMEN RICA	WOMEN
A22SJ201B0XX	22 TOUR RIDE JACK WOMEN CARTAGO	WOMEN



### Hip protector Male (SPIDI)

**Part No.** A18-PR110-B0-LX

**SIZE:** L/XL

Yamaha-Spidi Warrior hips protectors for jeans and tech pants.

- Warrior lit H, Z180 hip protectors
- EN 1621-1 leve. 1 certified
- Modular design for better fit



### Size chart

Size L/XL: for Men jeans

#### Pants where you can fit this Hip protector

Pants where you can fit this Hip protector		GENDER
A19EP110B0XX	19 RIDING JEANS MALE CONCORD	MEN
A19EP110E0XX	19 RIDING JEANS MALE CONCORD	MEN
A24PP102B1XX	24 FS CARGO PANT MEN FAS	MEN
A24PP102G2XX	24 FS CARGO PANT MEN FAS	MEN



## Gloves

Whichever season you choose to ride in, you need to be prepared and wearing the best riding gear. Ever since our company started in 1955, we've applied the same technical expertise to our gloves as we have to our motorcycles because we want everything we create to rev your heart. We promise that the performance and protection offered to you in this product will exceed your expectations.

NEW



## Paddock Blue Men's Knitted Gloves

**Part No.** A24-PB111-E0 **XX**  
**SIZE:** 0S-0M-0L-1L-2L-3L

Offering protection and comfort with a lightweight build, the Paddock Blue Men's Knitted Gloves are absolutely ideal for shorter rides out on two wheels. A knitted triple fabric blend features ventilated surfaces, with knuckle protectors for extra assurance. A Lycra cuff and strap closure ensure a snug fit for different sizes, with Amara and touchscreen fabric pieces for visor wiping and smartphone use. An essential Paddock Blue item for the committed rider.

- 3D knitted and ventilated fabric
- Knitted Lycra cuff with strap closure
- CE EN 13594: 2015 level 1 KP
- Knuckle protection
- 62% polyamide, 30% polyester, 7% polyurethane, 1% elastane
- \*Not waterproof, no isolation
- Touch screen material on index finger

NEW

## Paddock Blue Women's Knitted Gloves

**Part No.** A24-PB211-E0 **XX**  
**SIZE:** 1S-0S-0M-0L-1L

Technical and designed with protection and comfort at the front, the Paddock Blue Women's Knitted Gloves are stylish and lightweight. Easy to carry around for short rides out, they feature a knitted triple fabric blend in blue and white with ventilated surfaces, thermal layering and knuckle protectors for a reassuring fit. A Lycra cuff and strap closure allow a comfortable fit, with Amara and touchscreen fabric pieces for cleaning visors and smartphone use. A must-have Paddock Blue item for riders.

- 62% polyamide, 30% polyester, 7% polyurethane, 1% elastane
- Knuckle protection Level 1
- TPR (thermoplastic rubber) Yamaha branding
- Touch screen material on index finger
- CE EN 13594: 2015



NEW



## Enduro Gloves Men

**Part No.** A23-SG011-B4 **xx**

**SIZE:** 1S-0S-0M-0L-1L-2L-3L

A must-have for those rugged off-road adventures, the Enduro gloves for men offer protection, ventilation and comfort. A flexible triple black fabric blend assures easy mobility and dexterity, with reinforced palms and knuckle protection that do not hinder movement. A reinforced thumb gives better handlebar grip and comfort, with classic Yamaha branding and racing blue stripes adding a playful splash of colour.

- 65% nylon, 30% polyurethane, 5% neoprene ventilating fabric
- EN 13594:2015
- Thermoplastic Rubber (TPR) patches
- Reinforced palms and thumbs
- Knuckle protection
- Velcro closure system on cuffs

## MT Men's Winter Gloves

**Part No.** A24-MT110-B1 **xx**

**SIZE:** 0S-0M-0L-1L-2L-3L

Inspired by the iconic and cutting-edge Yamaha MT motorcycle line-up, the MT Men's Winter Gloves are technical and sophisticated for cold climate riding. Made from a multi-fabric blend in black with grey and blue highlights, these gloves feature thermal layering, waterproofing and knuckle protection combine to ensure comfort and protection on the road. Touchscreen material and Amara fabric allow smartphone use and visor cleaning. Ideal gloves for powering your MT with style and control.

- TPR (thermoplastic rubber) Yamaha branding
- CE EN 13594: 2015 level 1 KP
- Nylon small blue parts on top of fingers
- Strap closure
- 41% polyester, 21% polyamide, 6% polyurethane, 1% elastane
- Thermal protection: Waterproof and insulation (warmth) 100/40
- Amara fabric on finger to wipe visor
- Knuckle protection Level 1



**NEW**

## Sports Heritage Men's Riding Gloves

**Part No.** A24-FS011-B0 **XX**

**SIZE:** 0S-0M-0L-1L-2L

Giving Sport Heritage riders protection and comfort with a stylish finish, the Sport Heritage Men's Riding Gloves are ideal for shorter mid-season rides. A triple fabric blend features thermal insulation and knuckle protection for assurance, with Amara fabric for visor wiping and smartphone use. An essential for XSR riders who want to feel every moment.



**NEW**

## Sports Touring Men's Riding Gloves

**Part No.** A24-ST111-B4 **XX**

**SIZE:** 0S-0M-0L-1L-2L-3L

Giving Sport Touring riders protection and comfort with a stylish black-blue finish, the Sport Touring Men's Riding Gloves are ideal for shorter mid-season rides. A triple fabric blend features thermal insulation and knuckle protection for assurance, with Amara fabric for visor wiping and smartphone use. An essential for Tracer riders who want to feel every moment.

- Soft knuckle protection
- Touch screen material
- Lycra fourchettes
- 84% polyamide, 15% polyurethane, 1% elastane
- CE EN 13594:2015 Level 1 KP
- No waterproofing or isolation
- Amara on index finger for wiping visor





NEW



## Men's Winter Gloves

**Part No.** A24-SC111-B4 **xx**

**SIZE:** 0S-0M-0L-1L-2L-3L

Offering premium style and quality for cold weather riding, the multi-fabric Men's Winter Gloves feature insulation layers and leather for warmth and protection in two-tone black and grey. Level 1 knuckle protection fits seamlessly for movement and safety, with waterproof layering for extra protection from the elements. Touchscreen material and Amara fabric allow smartphone use and visor cleaning. A perfect item for enjoying and controlling your ride in the cold.

- CE EN 13594:2015
- 61% polyester, 22% goat leather, 13% polyamide, 3% polyurethane, 1% elastane
- Strap closure
- Printed Yamaha branding
- Touch screen material on index finger
- Thermal protection: Waterproof and insulation (warmth) 100/40
- Leather palm
- Knuckle protection Level 1

## Urban Mesh Gloves Men

**Part No.** A22-GL102-B0 **xx**

**SIZE:** 0S-0M-0L-1L-2L-3L

Featuring a lightweight Neoprene construction, these padded urban gloves are designed for summer riding. Silicon on the palms gives you added grip, and there's an Amara fabric patch for wiping your goggles or visor.

- Lightweight and comfortable design
- Neoprene and Amara construction
- Silicon on palm for extra grip
- Padded reinforcement
- Amara fabric for screen wiping





## Urban Leather Gloves Men

**Part No.** A22-GL101-B0 **XX**

**SIZE:** 0S-0M-0L-1L-2L-3L

Made from genuine cowhide leather with a comfortable polyester lining, these men's CE certified urban gloves give a good level of protection. Featuring short cuffs with a velcro closure, as well as Amara fabric for wiping your visor.

- Genuine cowhide leather
- Polyester lining
- CE certified
- Short cuffs with Velcro closure
- Amara fabric for screen wiping

## Urban Leather Gloves Women

**Part No.** A22-GL201-B0 **XX**

**SIZE:** 1S-0S-0M-0L-1L

Designed for female riders, these elegant and protective lightweight urban leather riding gloves are made from genuine cowhide leather and feature a comfortable polyester lining. With short cuffs and a velcro closure, as well as Amara fabric for wiping your visor.

- Genuine Cowhide leather
- Polyester lining
- CE certified
- Short cuffs with Velcro closure
- Amara fabric for screen wiping





## Scooter Collection

The Scooter Collection represents a new step in technical detailing and sustainability practices, fusing them in a smart, sporty city look that is both contemporary and definitively Yamaha. It gives the same technical precision feel as the range of Yamaha scooters that are redefining urban and suburban travel, offering exciting new street looks that push the boundaries of Yamaha apparel. Clean, focused and desirable is the DNA of the Scooter Collection.



## Scooter T-Shirt Men

**Part No.** B23-SC119-F4 **XX**

**SIZE:** 1S-0S-0M-0L-1L-2L-3L

Enjoy every moment of the city with the Scooter graphic t-shirt for men. Designed in unison with the new Yamaha scooter range, this grey t-shirt benefits from an organic cotton and viscose blend for supreme comfort and mobility. A brightly coloured Yamaha MOVE LIVE LOVE print in a central pop-up style adds an extra stylish twist.

- 50% organic cotton, 50% viscose, 170 grams
- Printed Yamaha graphic in pop-up style
- Colours connected to our MOVE LIVE LOVE logo
- Comfort fit

## Scooter T-Shirt Women

**Part No.** B23-SC208-F4 **XX**

**SIZE:** 1S-0S-0M-0L-1L-2L

Explore the city in style with the Scooter graphic t-shirt for women. Grey with a bright, colourful printed aligned with the new Yamaha scooter range, this t-shirt's organic cotton and viscose blend gives maximum comfort and movement for everyday wear. The MOVE LIVE LOVE print is a core element of this garment's look, with a central pop-up style Yamaha graphic adding a wonderful flourish.

- 50% organic cotton, 50% viscose, 170 grams
- Printed Yamaha graphic in pop-up style
- Colours connected to our MOVE LIVE LOVE logo
- Comfort fit





## Nothing but the Max Zip Hoodie Men

**Part No.** B23-SC106-B0 **XX**  
**SIZE:** 1S-0S-0M-0L-1L-2L-3L

Made to be one with Yamaha scooters, the Nothing but the Max zip hoodie for men is a true statement piece. Black organic cotton and recycled polyester are blended into this high-end garment, with a taped and lined hood and bonded front pockets offering comfort in style. Nothing but the Max branding on the chest and hood edge highlight its DNA, while the Yamaha logo on the back brings the look together for an instant classic.

- 70% organic cotton, 30% recycled polyester, fleece 320 grams
- Taped and lined hood
- Nothing but the Max logo on chest
- Yamaha branding on back
- Bonded zip hip pockets
- Full length colour contrast zip

## Nothing but the Max T-Shirt Men - Black

**Part No.** B23-SC107-B0 **XX**  
**SIZE:** 1S-0S-0M-0L-1L-2L-3L

Focused on its central Nothing but the Max chest logo, the design of the Nothing but the Max t-shirt for men reflects the Sport Scooter lifestyle with high quality construction. A 50/50 blend of organic cotton and viscose ensure incredible comfort for everyday wear, available in two colours for wider choice. Yamaha branding on the left shoulder highlights its premium feel and scooter spirit.

- 50% organic cotton, 50% viscose, 170 grams
- Printed front and back logos
- 3D Nothing but the Max logo
- Yamaha branding on left shoulder
- Printed stripe graphic on back
- Comfort fit





## Nothing but the Max T-Shirt Men - Petrol

**Part No.** B23-SC107-G1 **XX**

**SIZE:** 1S-0S-0M-0L-1L-2L-3L

Focused on its central Nothing but the Max chest logo, the design of the Nothing but the Max t-shirt for men reflects the Sport Scooter lifestyle with high quality construction. A 50/50 blend of organic cotton and viscose ensure incredible comfort for everyday wear, available in two colours for wider choice. Yamaha branding on the left shoulder highlights its premium feel and scooter spirit.

- 50% organic cotton, 50% viscose, 170 grams
- Printed front and back logos
- 3D Nothing but the Max logo
- Yamaha branding on left shoulder
- Printed stripe graphic on back
- Comfort fit



## Nothing but the Max Zip Sweater Women

**Part No.** B23-SC204-B0 **XX**

**SIZE:** 1S-0S-0M-0L-1L-2L

Led by strong fashion trends and highlighted with a stand-out asymmetric zip, the Nothing but the Max sweater for women embraces the atmosphere of the streets yet remains distinctly feminine. A taped collar with Yamaha branding and hip pockets offer comfort, while mesh on the front and back give great breathability for all-weather use. The iconic Nothing but the Max logo features on the left chest, while a Yamaha logo on the back gives an all-round statement look.

- 70% organic cotton, 30% recycled polyester fleece 320 grams
- Taped collar with Nothing but the Max logo
- 3D Nothing but the Max logo on left chest
- Zip hip pockets
- Full length asymmetric zipper





## Nothing but the Max Soft Cotton T-Shirt Women

**Part No.** B23-SC207-G1 **XX**

**SIZE:** 1S-0S-0M-0L-1L-2L

An elegant feminine cut, the Nothing but the Max t-shirt for women is an organic cotton and viscose blend that makes a bold statement in the collection. The blend of fabrics and upper back mesh panel ensures total comfort, with Nothing but the Max logo on the front to accentuate Yamaha tones. A vertical printed stripe graphic adds a cool twist on t-shirt design.

- 50% organic cotton, 50% viscose, 170 grams
- Printed Nothing but the Max logo on front
- Comfort fit

## Nothing but the Max Neck Tube Adult

**Part No.** N23-SC006-G1-00

Standing out in stunning petrol blue colour with black highlights, the Nothing but the Max neck tube for adults is perfect for city commuting or longer day trips. Dominated by a sublimated Nothing but the Max logo, this polyester neck tube is warm, comfortable and sure to draw attention.

- 100% polyester
- Petrol blue with black pattern design
- Sublimated Nothing but the Max logo



## Special Edition TMAX T-Shirt Men

**Part No.** B23-SC109-F3 **XX**

**SIZE:** 1S-0S-0M-0L-1L-2L-3L

Embracing its heritage from the iconic TMAX, the special edition TMAX t-shirt for men demands attention. Its 100% organic cotton construction guarantees sublime comfort, with an eye-catching two-tone embossed TMAX graphic on the chest. Yamaha branding on the shoulder completes an encompassing look, paying tribute to the power of the ultimate city commuter's machine.

- 100% organic cotton
- Embossed TMAX print on chest
- Yamaha branding on left shoulder



## TMAX Cap Adult

**Part No.** N23-SC301-B0-00

Built to feel sporty with comfort in mind, the TMAX cap for adults has contemporary design right through its construction. Made in 100% organic cotton that ensures soft comfort, the cap features an adjustable strap, air flow holes and an inner sweatband for easy wear wherever you are. A 3D TMAX logo on the front is highlighted with Yamaha branding on the peak. A colour contrast sandwich peak gives the finishing touch to a subtly stunning cap.

- 100% organic cotton
- Adjustable strap with metal clip
- Contrast grey sandwich peak
- Sweatband
- Top air flow holes
- 3D TMAX logo on front
- 3D Yamaha branding on peak
- Round peak
- Adult unisex fit





## Cycling Collection

Engineered for high intensity road racing and mountain biking, the new Cycle Collection sees a brand-new collaboration with Alpinestars. Inspired by the latest Yamaha MORO 07 eBike and designed in sync with the Paddock Blue line, the 2024 Cycle Collection is the perfect place to start your outdoor adventures

NEW



## MTB Men's Windjacket

**Part No.** B24-BJM01-E0 **XX**

**SIZE:** 0S-0M-0L-1L-2L

Lightweight, water resistant and windproof, the MTB Men's Windjacket is ideal for mountain biking adventures in changeable conditions. Made from 100% polyamide, zip pockets allow room for essentials, with ventilated panels giving good breathability when temperatures rise. White Yamaha Racing and Alpinestars branding complete a striking and iconic look.

- Zippered pockets
- Windproof
- 100% polyamide
- Fleeeced collar
- Yamaha Racing and Alpinestars branding
- Water resistant
- Ventilation panels

## MTB Men's T-Shirt

**Part No.** B24-BTM01-E0 **XX**

**SIZE:** 0S-0M-0L-1L-2L

Ventilated and designed for moisture wicking, the MTB Men's T-Shirt is a lightweight item that keeps you on the move. A blend of polyester and cotton, this tee features mesh panels for superior air flow and wicking capabilities to help you keep on biking in comfort.

- Mesh panels back and side for better ventilation
- 85% polyester 15% cotton, 135 grams
- Hook and loop adjustable waist
- Seamless seat area construction
- Superior freedom of movement
- Zippered pockets
- Hi-tech durable poly fabric
- 3D-modelled legs with multi panels for comfort
- Yamaha Racing and Alpinestars branding

NEW





NEW



## MTB Men's Long Sleeve Jersey

**Part No.** B24-BTM02-E0 **XX**

**SIZE:** 0S-0M-0L-1L-2L

High tech and durable, the MTB Men's Long Sleeve Jersey offers excellent breathability and comfort for all conditions. Made in a blend of recycled polyester and cotton, this jersey's fabric is dry release and features vented mesh panels for breathability. Printed Yamaha and Alpinestars branding gives it an iconic finish.

- 85% polyester, 15% cotton, 145 grams
- Moisture wicking
- Side and back mesh ventilation panels
- Dry release fabric
- Yamaha Racing and Alpinestars branding

## MTB Men's Pants

**Part No.** B24-BPM02-E0 **XX**

**SIZE:** 0S-0M-0L-1L-2L

Designed for mountain biking in tough conditions, the lightweight MTB Men's Pants offer great comfort and breathability. Constructed from multiple panels in a strong but flexible nylon and elastane blend, the pants feature an adjustable waistband, zip pockets for essentials and a seamless seat area. Yamaha and Alpinestars branding complete this must-have MTB look.

- Zippered pockets
- Yamaha Racing and Alpinestars branding

NEW



NEW



## MTB Men's Shorts

**Part No.** B24-BPM01-E0 **XX**

**SIZE:** 0S-0M-0L-1L-2L

Lightweight and stretchy for high intensity mountain biking activities, the MTB Men's Shorts allow a wide range of movement. A mix of nylon and elastane ensures strength and durability, with an adjustable waist band and seamless seat area for extra comfort. Zip pockets let you carry essentials, with Yamaha and Alpinestars branding in iconic racing blue and white.

- Yamaha Racing and Alpinestars branding
- Superior freedom of movement
- 85% nylon, 15% elastane, 180 grams
- Hook and loop adjustable waist
- Seamless seat area construction
- Zippered pockets

## MTB Men's Gloves

**Part No.** B24-GL001-E0 **XX**

**SIZE:** 0S-0M-0L-1L-2L

Engineered for optimum comfort on trials, the MTB Men's Gloves offer both flexibility and protection. A stretchy single layer spandex upper is combined with a synthetic suede palm for grip and control, with perforations for ventilation in changeable conditions. An essential item for committed mountain bikers.

- 83% polyamide, 12% polyurethane, 5% elastane
- Single layer spandex upper for comfort
- Adjustable strap
- Perforated for ventilation
- Yamaha Racing and Alpinestars branding

NEW



NEW



## Road Racing Men's Jersey

**Part No.** B24-BTR11-E0 **XX**

**SIZE:** 0S-0M-0L-1L-2L

A standout item for road riding, the Road Racing Men's Jersey is in line with the latest Paddock Blue design. Lightweight polyester offers excellent ventilation and quick drying, with a full-length zip for easy combination with a bib. Backside pockets give room for the essentials while printed Yamaha branding highlights the two-tone blue body.

- Backside pockets
- Printed Yamaha branding
- 100% polyester micro finish
- Lightweight and ventilated
- Full-length zip
- To wear above the bib
- Printed Yamaha branding front and back

## Road Racing Bike Bib Shorts Men

**Part No.** B22-BSM01-B0 **XX**

**SIZE:** 0S-0M-0L-1L-2L

Polyester spandex bib men's road racing shorts manufactured with breathable stretch fabric straps for added comfort. Equipped with a removable antibacterial chamois interior, and designed to be worn together with our Yamaha road racing jersey.

- Breathable stretch fabric straps
- Removable antibacterial chamois crotch
- Polyester spandex bib short
- Breathable stretch fabric straps
- Removable antibacterial chamois crotch
- Polyester spandex bib short

NEW





## MTB Short Sleeve Jersey Men

**Part No.** B22-BTM02-F3 **XX**

**SIZE:** 0S-0M-0L-1L-2L

Manufactured from recycled polyester fabric, the short sleeve MTB men's jersey features a 4-way stretch fabric for ultimate riding comfort. Fully breathable and fast wicking construction helps to keep you cool in the most extreme riding conditions.

- Recycled polyester stretch fabric
- 4-ways stretch for ultimate riding comfort
- Fully breathable and fast wicking design

## MTB Shorts Men

**Part No.** B22-BPM02-B0 **XX**

**SIZE:** 0S-0M-0L-1L-2L

Yamaha's flexible and breathable men's MTB shorts are made from recycled polyester PET fabric and are equipped with 2 convenient zippered pockets. 3D tailored design with an internal waist adjuster gives a perfect fit.

- Recycled polyester stretch PET fiber fabric
- 3D tailored for a race performance fit
- 2 zippered hand pockets
- Breathable and flexible
- Internal waist adjuster





## Bidon Water Bottle for Cycling Blue

**Part No.** N22-BD008-B0-00

With a 750 ml capacity, the Yamaha bidon bottle is a perfect travel accessory for your road trips with your eBike. This essential item is easy to use with the Yamaha bottle holder on your bike.

- Available in two colors: Blue and Black
- Easy to combine with Yamaha bottle holder
- 750 ml Bidon bottle
- Made of Plastic

## Bidon Water Bottle for Cycling Black

**Part No.** N22-BD008-E0-00

With a 750 ml capacity, the Yamaha bidon bottle is a perfect travel accessory for your road trips with your eBike. This essential item is easy to use with the Yamaha bottle holder on your bike.

- Available in two colors: Blue and Black
- Easy to combine with Yamaha bottle holder
- 750 ml Bidon bottle
- Made of Plastic





## REVS Collection

The REVS Collection marks a dynamic new approach to contemporary apparel and lifestyle. It accentuates body forms and combines premium Yamaha quality and attention to detail. Harnessing the latest cutting-edge technologies and high-tech processes, from mixed recycled fabrics to dynamic cuts and bonded seams, the REVS collection is a key part of the company's move towards increased sustainability while keeping form or function at heart. The result is a clean, iconic design harmony between the flowing and the mechanical, a truly modern style.





## REVS Outerwear Jacket Men

**Part No.** B23-RV112-B0 **XX**

**SIZE:** 1S-0S-0M-0L-1L-2L-3L

Presented in striking black and red tones, the REVS outerwear jacket for men gives you full water resistance and mobility inside a recycled stretch fabric shell, offering comfort and warmth wherever the journey takes you. A 3-panel lined fixed hood and zippered front pockets helps shield you from the elements, while bold Yamaha branding on the chest, back and sleeves capture the cutting-edge REVS essence.

- Outer shell 96% recycled polyester, 4% elastane
- Lining 100% polyester
- Padding polyester
- Adjustable cuffs
- Fixed hood with lining
- Yamaha branding on chest, sleeve and back
- Two zip front pockets

## REVS Zip Hoodie

**Part No.** B23-RV110-B0 **XX**

**SIZE:** 1S-0S-0M-0L-1L-2L-3L

Crafted in black and red from organic and recycled fabrics, the REVS zip hoodie for men gives maximum form and function outdoors. A 3-panel hood with integrated stoppers helps keep out the elements with bonded zippered front pockets to keep your hands warm. A blend of organic cotton and recycled polyester make this a standout piece, with strong Yamaha branding on the chest, back and sleeve combined in a typically eye-catching REVS look.

- 70% organic cotton, 30% recycled polyester
- Double face sweat fabric, 300 grams
- Contrast colour inner hood
- Self-fabric hem and cuffs
- Full length zip
- Detail stripe and logo on left sleeve
- Perforated red stripe on back
- 3D chest logo





## REVS Padded Sweater Men

**Part No.** B23-RV111-F2 **XX**

**SIZE:** 1S-0S-0M-0L-1L-2L-3L

Produced in slick grey and black with red highlights, the stylish REVS padded sweater is specially quilted to keep you warm. Double face sweat fabric regulates temperature, with front zip pockets and chest patch pocket offering ample space. Its organic cotton and recycled polyester blend features printed red stripes on the sleeve and back, with standout Yamaha branding on the chest presenting a contemporary REVS silhouette.

- 70% organic cotton, 30% recycled polyester
- Double face sweat fabric, 300 grams
- Quilted front and back body
- Zip front pockets and chest pocket
- Self-fabric collar
- Detail stripe and Yamaha logo on left sleeve
- 3D Yamaha branding on chest
- Perforated red stripe on back

## REVS Polo men

**Part No.** B23-RV109-B0 **XX**

**SIZE:** 1S-0S-0M-0L-1L-2L-3L

Black with striking red and grey highlights, the REVS polo shirt for men is a modern, smart casual sophisticated piece. An organic cotton and elastane construction creates a comfortable silhouette, with a knitted two-colour collar and button closure emphasising the REVS style. Seamless sleeves and hem add real style to this shirt, with staple printed red stripes on the sleeve and back, and Yamaha chest branding.

- 95% organic cotton, 5% elastane pique
- Two-colour knitted collar
- Button closure
- Seamless sleeves and hem
- 3D Yamaha branding on left chest
- Perforated red stripe on back





## REVS T-Shirt Men

**Part No.** B23-RV101-B0 **XX**

**SIZE:** 1S-0S-0M-0L-1L-2L-3L

Available in black or grey melange, the REVS t-shirt for men blends contemporary style with classic Yamaha design. Shaped for a comfort fit this crew neck t-shirt is an all-weather, all-round garment for everyday use. Containing a mix of organic and recycled materials, it features bold Yamaha logo branding on the chest and sleeve, with a printed sleeve red stripe and perforated back stripe. An instant, cool REVS classic.

- Black 95% organic cotton, 5% elastane
- 3D Yamaha branding on left chest
- Perforated red stripe on back

## REVS Jog Pants Men

**Part No.** B23-RV108-B0 **XX**

**SIZE:** 1S-0S-0M-0L-1L-2L-3L

Designed for comfort and speed, the REVS jog pants for men are both stylish and highly wearable. Made in black from a cotton and polyester blend, they feature two bonded front pockets and a single rear pocket. Red detailing stripes on each leg and a left thigh Yamaha logo highlight its REVS heritage. Tapered legs create a tight fit ideal for exercise, with self-fabric hems keeping their shape.

- 42% cotton, 58% polyester, 330 grams double face
- Two front pockets
- Rear pocket
- Tapered legs
- Self-fabric bottom hems
- Red detail stripes at sides
- Tight fit
- Printed Yamaha branding





## REVS Outerwear Jacket Women

**Part No.** B23-RV212-B0 XX  
**SIZE:** 1S-0S-0M-0L-1L-2L

Contemporary design meets elegance with the REVS outerwear jacket for women. A fully waterproof recycled black shell is cut for a flowing, feminine shape that provides comfort and warmth on cold days. A 3-panel lined fixed hood and zip pockets help protect you from the weather. Strong Yamaha branding on the chest with red stripes on the sleeve and back finish off the outdoor REVS look.

- Outer shell 96% recycled polyester, 4% elastane
- Lining 100% polyester, padding polyester
- Adjustable cuffs
- Fixed hood with lining
- Yamaha branding on chest, sleeve and back
- Red stripes on sleeve and back
- Two zip front pockets

## REVS Zip Sweater Women

**Part No.** B23-RV207-B0 XX  
**SIZE:** 1S-0S-0M-0L-1L-2L

Led by fashion and highly wearable, the REVS zip sweater for women is contemporary in design. The streamlined, feminine cut is made from organic and recycled materials, featuring a stylish red asymmetrical zip and two front pockets. Classic Yamaha branding on the chest, sleeve and back bring the look together, with red striping for that fine finishing detail. An instant REVS highlight.

- 70% organic cotton, 30% recycled polyester
- Double face sweat fabric, 300 grams
- Asymmetric front zipper
- Yamaha branding on chest, sleeve and back
- Two front pockets





## REVS Polo Shirt Women

**Part No.** B23-RV209-B0 **XX**

**SIZE:** 1S-0S-0M-0L-1L-2L

Black with subtle red and grey highlights, the REVS polo shirt for women is a sophisticated garment reflecting the REVS DNA. Its organic cotton and elastane construction creates a feminine silhouette, with a knitted two-colour collar and button closure emphasising REVS style. Seamless sleeves and hem add real comfort, with classic Yamaha chest branding and printed red stripes on the sleeve and back reflecting the neck line.

- 95% organic cotton, 5% elastane pique
- Two-colour knitted collar
- Button closure
- Seamless sleeves and hem
- 3D Yamaha branding on left chest
- Perforated red stripe on back

## REVS T-Shirt Women

**Part No.** B23-RV201-B0 **XX**

**SIZE:** 1S-0S-0M-0L-1L-2L

A modern twist on a classic design, the REVS t-shirt for women is available in stylish black or grey melange. Open necked and subtle yet striking, this comfort fit t-shirt is a perfect all-round garment that can be worn anywhere, any time. A Yamaha chest and sleeve logo is complemented by a red stripe on the sleeve, with a perforated back stripe for an all over REVS look and feel.

- Black 95% organic cotton, 5% elastane
- 3D Yamaha branding on left chest
- Perforated red stripe on back





## REVS T-Shirt Women

**Part No.** B23-RV201-F0 **XX**

**SIZE:** 1S-0S-0M-0L-1L-2L

A modern twist on a classic design, the REVS t-shirt for women is available in stylish black or grey melange. Open necked and subtle yet striking, this comfort fit t-shirt is a perfect all-round garment that can be worn anywhere, any time. A Yamaha chest and sleeve logo is complemented by a red stripe on the sleeve, with a perforated back stripe for an all over REVS look and feel.

- Grey 58% organic cotton, 38% recycled polyester, 2% elastane
- 3D Yamaha branding on left chest
- Perforated red stripe on back

## REVS Jog Pants Women

**Part No.** B23-RV208-B0 **XX**

**SIZE:** 1S-0S-0M-0L-1L-2L

Designed to offer comfort throughout regular use, the REVS jog pants for women capture the REVS DNA of mixing the flowing and mechanical. A feminine cut in a black cotton and polyester blend, the jog pants feature two front pockets and snap closure rear pocket for essentials. Red detailing stripes on each leg and a left thigh Yamaha logo highlight the REVS heritage, while a corded waistband ensures practicality for all uses.

- 42% cotton, 58% polyester, 330 grams double face
- Two front pockets
- Corded waistband
- Rear pocket with snap closure
- Yamaha branding on left thigh
- Perforated left leg stripe
- Self-fabric hem





## REVS T-Shirt Kids

**Part No.** B23-RV310-F0 **XX**

**SIZE:** 06-08-10-12-14-16-18\*

Give the whole family the REVS look with the REVS t-shirt for kids. Designed in the same slick melange grey look as the adult t-shirt, kids can look cool and feel comfortable all day in this cotton and polyester blend. Bold Yamaha branding on the chest is highlighted with iconic red stripes on the sleeve and back to give fans of all ages the signature REVS look.

- 58% organic cotton, 38% recycled polyester, 2% elastane
- Printed Yamaha chest and sleeve branding
- Red stripe on left sleeve
- Perforated back stripe



## REVS Zip Sweater Kids

**Part No.** B23-RV402-B0 **XX**

**SIZE:** 06-08-10-12-14-16-18\*

REVS sophistication meets next-gen materials in the REVS zip sweater for kids. Aligned with the stylish shape of the adult zip sweater, this organic cotton and recycled polyester mix keeps things comfortable and warm for outdoor occasions. A contrast lined fixed hood and Yamaha branding on the chest, sleeve and back are tied together with staple red stripes. A kangaroo pocket adds extra practicality for a Yamaha classic that kids will love.

- 70% organic cotton, 30% recycled polyester
- Double face sweat fabric, 300 grams
- Three-quarter length zip
- Hood with contrast colour inside
- Yamaha branding on chest, sleeve and back
- Printed striping on sleeve and back
- Kangaroo pocket

*No	cm	Age
06	92	1,5-2 yrs
08	104	3-4 yrs
10	116	5-6 yrs
12	128	7-8 yrs
14	140	9-10 yrs
16	152	11-12 yrs
18	164	13-14 yrs





## REVS Beanie Adult

**Part No.** N23-RV310-B0-00

Simply stylish and highly practical, the REVS beanie for adults fuses recycled materials with contemporary design for a beanie that you can take everywhere. Composed of recycled material, the one size fits all beanie features knitted two-colour red and grey stripes, tied together with printed Yamaha branding for a clean REVS look.

- 60% recycled polyester, 40% acrylic for soft touch
- Knitted stripes with printed Yamaha branding
- Seaming to crown for better fit

## REVS Cap Adult

**Part No.** N23-RV300-B0-00

Fashion meets straightforward function with the REVS cap for adults. Designed for absolute comfort wherever you go, this panel cap features a melange grey peak and contrasting black front, both stiffened to stand out and keep its shape. Breathable mesh and an adjustable strap offer extra practicality, with a printed red and grey striped detail complementing the eye-catching front Yamaha branding.

- Dark grey 40% wool, light grey 50% polyester
- Peak with contrast sandwich colour
- Sweatband
- Adjustable strap with metal clip
- Yamaha branding on front
- Printed stripe artwork
- Adult unisex fit





## Racing Heritage Collection

Embracing the iconic red and white racing colours to commemorate over 60 years of Yamaha competing at the highest level of motorcycle racing, the Racing Heritage Collection is a sporty and retro range for everyday use. The legendary 'speed block' design is also a focal point of every piece, evoking classic racing moments and spirit. Understated and commanding attention, this collection effortlessly combines Yamaha Racing heritage with a contemporary style.

### Racing Heritage Softshell Men

**Part No.** B23-RH123-W6 **XX**

**SIZE:** 1S-0S-0M-0L-1L-2L-3L

Elegant and sleek, the Racing Heritage softshell for men is an instant reminiscence of historic Yamaha racing design. The recycled polyester and elastane fabrics provide great comfort and mobility, and this off-white softshell is highlighted with a bold printed red speed block graphic across the chest. Inner fleece lining ensures extra warmth, while a black zipper contrasts with red zipped pockets. Strong white Yamaha branding on the chest and Yamaha Racing Heritage Club logo on the arm sets off the whole look.

- 96% recycled polyester, 4% elastane
- Fleece lining
- Special Racing Heritage design
- Printed red speed block and Yamaha logo
- Contrast red zipped pockets
- Bonded inside seams



### Racing Heritage Zipped Hoodie Men

**Part No.** B23-RH122-W6 **XX**

**SIZE:** 1S-0S-0M-0L-1L-2L-3L

Comfortable and robust, the Racing Heritage zipped hoodie for men is ideal for regular outdoor use. A blend of off-white organic cotton and recycled polyester offers flexibility and warmth, with a lined hood and pockets for extra weather protection. The iconic red speed block chest graphic features white Yamaha logo, while the full black zipper contrasts with red zip pockets to create that classic Yamaha Racing look.

- 70% organic cotton, 30% recycled polyester
- Soft brushed fabric
- Special Racing Heritage design
- Printed red speed block
- Yamaha logo on chest
- Yamaha Racing Heritage Club Logo on left sleeve
- Contrast red zipped pockets
- Ribbing on cuffs and bottom





## Racing Heritage T-Shirt Men

**Part No.** B23-RH121-W6 **XX**

**SIZE:** 1S-0S-0M-0L-1L-2L-3L

An essential for the Yamaha Racing fan, the Racing Heritage men t-shirt carries the iconic Yamaha racing design. Perfect for everyday wear this Racing heritage t-shirt comes in black or white. The comfortable blend of organic cotton and elastane allows for great mobility, and this t-shirt features the racing heritage red speed block graphic across the chest. Yamaha branding on the chest and sleeve express Yamaha's rich racing heritage and give an all-round racers' look.

- 95% organic cotton, 5% elastane
- Soft cotton touch
- Special Racing Heritage design
- Printed red speed block
- Yamaha logo on chest
- Yamaha Racing Heritage Club Logo on left sleeve

## Racing Heritage T-Shirt Men

**Part No.** B23-RH121-B0 **XX**

**SIZE:** 1S-0S-0M-0L-1L-2L-3L

An essential for the Yamaha Racing fan, the Racing Heritage men t-shirt carries the iconic Yamaha racing design. Perfect for everyday wear this Racing heritage t-shirt comes in black or white. The comfortable blend of organic cotton and elastane allows for great mobility, and this t-shirt features the racing heritage red speed block graphic across the chest. Yamaha branding on the chest and sleeve express Yamaha's rich racing heritage and give an all-round racers' look.

- 95% organic cotton, 5% elastane
- Soft cotton touch
- Special Racing Heritage design
- Printed red speed block
- Yamaha logo on chest
- Yamaha Racing Heritage Club Logo on left sleeve



### Racing Heritage Polo Shirt Men

**Part No.** B23-RH125-W6 **XX**

**SIZE:** 1S-0S-0M-0L-1L-2L-3L

A smart and elegantly designed garment, the Racing Heritage polo shirt for men with button closure gives you that classic racing look. The organic cotton and elastane blend ensures mobility and comfort, while the off-white body contrasts nicely with the iconic red speed block graphic on the chest and the red colour block on the upper back. The racing heritage look is completed with the white Yamaha logo inside the speed block graphic on the chest and black Yamaha logo on the back.

- 95% organic cotton, 5% elastane pique
- Special Racing Heritage design
- Printed red speed block
- Printed red contrast stripe on back
- Yamaha logo on chest and back
- Yamaha Racing Heritage Club Logo on left sleeve
- Button collar closure



### Racing Heritage Cap Adult

**Part No.** N23-RH123-W6-00

A simple but bold expression of Yamaha racing history, the Racing Heritage cap in black or off-white is an everyday essential for year-round wear. Coming in 100% organic cotton, the cap features the classic Yamaha Racing red speed block design on the front with white Yamaha logo and the Yamaha Racing Heritage Club logo on the back. The inner sweatband ensures comfort in warm weather, while the back strap provides full adjustability.

- 100% organic cotton
- Special Racing Heritage design
- Printed red speed block
- Yamaha logo on front
- Yamaha Racing Heritage Club Logo on back
- Inner sweatband for comfort
- Adjustable back strap
- Unisex adult cap







## Racing Heritage Cap Adult

**Part No.** N23-RH123-B0-00

A simple but bold expression of Yamaha racing history, the Racing Heritage cap in black or off-white is an everyday essential for year-round wear. Coming in 100% organic cotton, the cap features the classic Yamaha Racing red speed block design on the front with white Yamaha logo and the Yamaha Racing Heritage Club logo on the back. The inner sweatband ensures comfort in warm weather, while the back strap provides full adjustability.

- 100% organic cotton
- Special Racing Heritage design
- Printed red speed block
- Yamaha logo on front
- Yamaha Racing Heritage Club Logo on back
- Inner sweatband for comfort
- Adjustable back strap
- Unisex adult cap



## Racing Heritage Keyring

**Part No.** N23-RH003-B7-00

With a vintage look and feel recalling classic Yamaha racing design, the Racing Heritage keyring is a stylish accessory for everyday use and convenience. The black leather retro-styled keyring features a metal Yamaha Racing Heritage Club logo emblem and white stitching, while the metal ring allows keys and other essential items to be carried safely.





## Luggage

Whichever season you choose to ride in, you need to be prepared to carry the best luggage. Ever since the launch of our company in 1955, we've applied the same technical expertise on our luggage as we have to our rev your heart. We promise that the performance offered to you in this product will exceed your expectations.

NEW



## Paddock Blue Backpack

Part No. T24-JA002-E0-00

Robust, technical and striking, the Paddock Blue Backpack has been precisely designed to let you carry essential items with Yamaha style. Made from polyester in Paddock Blue's staple two-tone blue, this backpack offers 35 litres of storage. Comfortably accommodating a laptop and more in the main compartment, it also carries a welded front pocket for smaller items. Adjustable straps and foam with 3D mesh padding allow comfort for all wearers.

- 47 x 35 x 13 cm
- Printed Yamaha Racing branding
- Welded pocket at front
- 21 liters
- Backside with foam and 3D mesh
- 300 D polyester
- Adjustable strap
- Reversed zipper

## Paddock Blue Sling Bag Paddock Blue Sling Bag

Part No. T24-JA003-E0-00

Light, compact and easy to carry around, the Paddock Blue Sling Bag is an ideal storage solution when you're on the move. 3.7 litres and made from polyester and nylon, this bag's ripstop pattern ensures durability with eye-catching two-tone blue and black shades. A main lined pocket is joined by a smaller front pocket, with open side pockets for bottles. Wearable on either side of the body thanks to a fixed strap, this sling bag is perfect for race days and trips.

- 17 x 24 x 6.5 cm, 3.7 litres
- Lined inner pocket
- Front zip pull pocket with removable keychain
- Outer side pockets
- Neoprene handle
- Top zip front opening
- 600 D polyester main fabric, 210 nylon ripstop pattern
- Wearable either side of body

NEW



NEW



## Paddock Blue Messenger Bag

Part No. T24-JA004-E0-00

With a snug fit for laptops and essential work items, the Paddock Blue Messenger Bag is a sleek and super stylish piece of luggage in two-tone Yamaha blues. Made from polyester and nylon with ripstop pattern for lightweight strength, this bag offers 2.5 litres of space with a lined and foamed body to protect tablets and laptops. A removable zip keychain affords extra use, with an adjustable strap for comfort.

- 600 D polyester main fabric, 210 nylon ripstop pattern
- Outer zip pull pocket with removable keychain
- Adjustable belt with loop to avoid flapping
- 29 x 22 x 4 cm
- 2.5 litres
- Fully lined
- Foam body
- Printed Yamaha Racing branding

## Paddock Blue Waist Bag

Part No. T24-JA005-E0-00

A classic design of daily luggage, the Paddock Blue Waist Bag makes a great travel item. Offering 3.7 litres of space in a blue polyester and nylon shell, this bag carries a ripstop pattern that affords lightweight strength. The main compartment opens from the top with a smaller front pocket and removable keyring. Wearable at the waist or around the body, this bag is highly versatile and a Paddock Blue essential.

- Two inner pockets
- 17 x 24 x 6.5 cm
- Top zip front opening
- 600 D polyester main fabric, 210 nylon ripstop pattern
- Front zip pull pocket with removable keychain
- 3.7 litres
- Printed Yamaha Racing branding

NEW



NEW



## Paddock Blue Crossbody Bag

Part No. T24-JA006-E0-00

Perfect for discreetly carrying essential items around track or town, the Paddock Blue Crossbody Bag offers 3 litres of compact storage. Created from a mix of polyester and nylon in blue, its ripstop pattern allows lightweight strength while the single outer pocket features a zip with an additional removable keyring for extra utility.

- 3 litres
- 17 x 24 x 6.5 cm
- 600 D polyester main fabric, 210 nylon ripstop pattern
- Printed Yamaha Racing branding
- Single pocket with reverse zipper and removable keychain

## Paddock Blue Kids Ride-on Suitcase

Part No. T24-JF600-E0-00

Perfect for holidays and trips long or short, the Paddock Blue Kids Ride-on Suitcase is a fun and quirky bag that little Yamaha fans will love. Featuring a special R1-inspired graphic, kids can ride their unique wheeled luggage and imagine being on two wheels. Offering a spacious 19 litres of space with a cool interior lining, a divider and straps make it easy for parents to help their kids pack while the shoulder strap doubles as a carrying strap. Easy movement is afforded by 360° front wheels. A must-have luggage item for kids that love to ride and travel.

- Yamaha Racing blue with special R1 visual
- 19-litres
- Dimensions: 52 cm x 30 cm x 22 cm
- ABS with polycarbonate film shell
- 2.5 - 5 years old (for riding on luggage)

NEW







## Yamaha Business Cabin Trolley Black

**Part No.** T22-LB020-B0-00

Yamaha's lightweight business cabin trolley weighs just 2.95kg and gives a capacity of 38 litres. Featuring a special MicroShield™ shock-resistant and high-quality ABS construction.

- 100% ABS
- 55 x 40 x 23 cm incl wheels and handles
- 2 TSA approved locks
- LaunchPad™ specially integrated compartment to protect your laptop
- Capacity 38 litres, weight 2.95 kg
- Multi-stage telescopic handle
- Fully-lined with integrated divider and pockets and packing straps in the base



## Yamaha Race Cabin Trolley blue

**Part No.** T22-LB002-E0-00

Yamaha Race lightweight cabin trolley equipped with many features and has enough space for weekend trip to see the races or city trip.

- 100% ABS
- 55 x 40 x 23 cm incl wheels and handles
- 2 TSA approved locks
- MicroShield™ shock-resistant, high-quality ABS shell with scratch and scuff resistance
- Capacity 38 litres, weight 2.95 kg
- Multi-stage telescopic handle







## Yamaha Racing Trolley XL

**Part No.** T22-JG001-B4-00

The extra large 184 litre trolley kit bag is designed to carry your complete set of racing gear including helmet and boots. Its tough plastic base and durable polyester outer cover protects your belongings, and various lined internal compartments make it easy to organise your gear. Includes a retractable handle and 2 wheels for when you're on the move.

- 184 litre capacity
- 95 x 45 x 43 cm
- Durable polyester outer with lining and mesh zip-up compartments
- Tough plastic base
- Retractable handle and 2 wheels
- 4 buckles with webbing and extra handles

## Yamaha Racing Water Bag

**Part No.** T21-JG003-B4-00

Keep yourself hydrated while riding with this Yamaha Racing water bag.

- 10 L capacity for bag
- Zipped front pocket for smaller personal belongings
- Mesh pockets
- Mesh parts for ventilation
- Black with Yamaha Racing blue accents
- Features Yamaha Racing logo
- Size: 41x 20 x 9 cm
- Heavy-duty polyester backpack
- 1.5 L water bag
- Left and right opening for hydra tube
- Adjustable chest and waist belts
- Polyester inner lining



NEW



### Paddock Blue Tote Bag Blue

Part No. N24-JC002-E0-00

Carry your essentials with you everywhere with the Paddock Blue Tote Bag Blue. Made from 100% cotton in Racing Blue, now you can avoid using plastic and paper bags and help look after the planet with this heavy duty and reusable tote bag. Perfect for taking to work, the gym or shopping, with Yamaha Racing branding to show off your passion.

- Yamaha Racing branding
- Heavy duty
- 42cm x 37cm
- 100% Cotton
- Yamaha branding

### Paddock Blue Tote Bag Black

Part No. N24-AC002-B0-00

Never use a plastic bag again with the Paddock Blue Tote Bag Black. Heavy duty 100% cotton, you can take this tote with you from home to the track, work, gym and more. Carry your belongings in style with the iconic Yamaha logo in white to proudly show your passion.

- Yamaha Racing branding
- Heavy duty
- 42cm x 37cm
- 100% Cotton
- Yamaha branding

NEW



## Baby Collection

Taking inspiration from Paddock Blue and Yamaha Racing's iconic branding, the 2024 Paddock Blue Baby Collection offers parents a range of fun, cool and convenient items to give their toddlers maximum comfort. From bodysuits to bath capes, the Paddock Blue Baby Collection is the perfect starting place for Yamaha's newest family members.

### Paddock Blue Baby Giftpack

**Part No.** B24-KB602-E0 **xx**

**SIZE:** 0A-01-03

Give the next generation of Yamaha fans the perfect start with the Paddock Blue Baby Giftpack. Featuring two bodysuits in blue/white, made from a soft and comforting cotton and elastane blend, and a fabric plush rattle inspired by the cartoon Paddock Blue character.

- White and blue bodysuits with printed Paddock Blue character
- 95% cotton, 5% elastane jersey bodysuit construction
- Push button crotch opening with flexible neck and shoulder line
- Three sizes available
- 100% polyester rattle

**NEW**



*No	Age
01	2-4 months
03	6-8 months
0A	0 months

NEW



*No	Age
01	2-4 months
03	6-8 months
0A	0 months

## Paddock Blue Baby Coversuit

**Part No.** B24-KB603-E0 **XX**

**SIZE:** 0A-01-03

Designed to keep newborns warm wherever they go with you, the Paddock Blue Baby Coversuit features a hood and a blend of cotton (organic) and polyester for a supremely soft feel. A full-length zipper makes fitting easy, with ribbed cuffs and legs for extra support and comfort. Printed Yamaha Racing branding gives a striking finish.

- Soft brushed inner
- Full length zipper
- Racing blue with printed Yamaha Racing branding
- 84% cotton 16% polyester, 260 grams
- Ribbed cuffs and legs

## Paddock Blue Baby Bodysuit

**Part No.** B24-KB601-E0 **XX**

**SIZE:** 0A-01-03

Made for the newborn Yamaha fans to get comfy in, the Paddock Blue Baby Bodysuit is crafted from a super soft blend of cotton and elastane. A push button crotch and flexible neck opening make easy fitting and wear, with printed Yamaha Racing branding on the chest for instant recognition.

- 95% cotton, 5 % elastane jersey, 180 grams
- Push button crotch opening with flexible neck and shoulder line
- Iconic racing blue with printed Yamaha Racing branding
- Three sizes available

NEW



NEW



## Paddock Blue Baby Bath Cape

Part No. N24-KB705-E0-00

Make every kid's bath time cosy with the Paddock Blue Baby Bath Cape. Made in 100% cotton with a large hood, this cape is soft and super comfy to keep kids warm and dry, from baths to the beach.

- Racing blue with embroidered Yamaha Racing branding
- Suitable for 0 to 18 months
- 75x75 cm
- 100% Cotton
- Water absorbent

## REVS Baby Gift Pack

Part No. B23-RV705-F4 **xx**

SIZE: 0A-01-03

Bring out their passion for Yamaha early with the REVS baby gift pack. Comprising a grey bodysuit, beanie hat and cuddly toy, toddlers from 1-18 months will enjoy the comfort of each item. The bodysuit features a cartoon 'First Steps' and Yamaha print on the chest, with Yamaha logos on the beanie and toy. Short sleeves feature an iconic REVS red stripe, with press stud fastenings between the legs for quick changing and comfort.

- Washable to 40C
- Printed 'First Steps' graphic and Yamaha branding on bodysuit chest
- Press buttons between legs
- 95% organic cotton, 5% elastane, 180 grams jersey
- Yamaha branding on beanie and toy
- Short sleeves

NEW



*No	Age
01	2-4 months
03	6-8 months
0A	0 months



## Merchandise

Taking style and design inspiration from the latest must-have Yamaha apparel, the Novelties Collection brings you a range of fun and useful items to accessorise your daily life with a classic Yamaha twist. From the brand-new Track Chair to Multitool Keyring and Crew Socks, every item in the Novelties Collection has a function that Yamaha fans of all ages can enjoy using



NEW



## Paddock Blue Crew Socks

**Part No.** B24-JF305-E0 **XX**

**SIZE:** SM-LX

For long days at the track or work spent on your feet, nothing says comfort like the Paddock Blue Crew Socks. A blend of cotton, polyamide and elastane delivers a combination of durability, comfort and stretch that your feet will love. With a unisex fit available in two sizes, these socks carry Yamaha Racing branding that help you walk the walk.

- Yamaha Racing branding
- 60% cotton, 28% polyamide, 12% elastane
- Unisex in two sizes: 39/42 (SM) and 43/46 (LX)
- Soft and durable

## Paddock Blue Heat Changing Mug

**Part No.** N24-JD000-E0-00

Fun, eye-catching and cool, the Paddock Blue Heat Changing Mug is an ideal Yamaha fan's novelty that's sure to catch attention. 100% ceramic, the mug changes from subtle black and blue to full Yamaha Racing branding with hot liquid, then back to its original once it cools. Perfect for enjoying a hot drink watching a race or at your desk

- Resistant and durable
- Colour changes with heat; above 45 C and below 17 C
- 100% ceramic
- Yamaha Racing branding
- Hand wash only

NEW



NEW



## Paddock Blue Water Bottle

Part No. N24-JD008-E0-00

Keep yourself hydrated from home to the track with the Paddock Blue Water Bottle. With 750ml capacity, the bottle features level markers with motivational text to help you stay topped up throughout the day. A flip up plastic straw makes drinking on the go easy, with Yamaha Racing branding and Racing Blue shades giving an eye-catching look.

- 750 ml plastic bottle
- Flip up straw
- Motivational text reminds you to stay hydrated
- Translucent Racing Blue

NEW

## Paddock Blue Multitool Keyring

Part No. N24-JK004-E0-00

A perfect gift for bikers and fans of the outdoors, the Paddock Blue Multitool Keyring offers a range of useful functions on the go. Made from durable black stainless steel, the multitool features a ruler, bottle opener, three hex key sockets and cutting edge. A carry pouch makes it easy to attach to keys, bags, bikes and more to keep this incredibly useful tool with you at all times.

- Stainless steel
- Ruler, bottle opener, hex key and cutter
- Printed Yamaha Racing branding
- PU leather carry pouch



NEW



## Paddock Blue AirTag Keyring

**Part No.** N24-JK006-E0-00

Never lose your keys again with the Paddock Blue AirTag Keyring. Designed to accommodate and protect the Apple AirTag tracking device, the keyring features a silicone Yamaha Racing tag that can be replaced with an AirTag or left in for a simple and stylish Paddock Blue keyring. PU leather and stainless steel construction help avoid scratches and damage to your AirTag.

- Yamaha Racing branding
- Silicone tag can be replaced with the 2021 AirTag (not included)
- Protects your Apple AirTag from scratches, drops and bumps
- Made from PU leather and stainless steel

## Paddock Blue Bike Magnet Set

**Part No.** N24-JP010-E7-00

Give the Yamaha fan in your life something awesome to look at every day with the Paddock Blue Bike Magnet Set. Attachable to metal or magnetic surfaces, this set includes eight iconic models from Yamaha's latest line-up and a Yamaha Racing magnet. Choose your favourite or admire them all at once, this magnet set makes a great bike fan's gift.

- 45 mm x 30 mm
- Can be applied to metal or magnetic surface
- Eight iconic Yamaha models: R1, TMAX, MT-07, YZ450F, XSR900, Ténéré 700, R7 and Tracer 9 GT

NEW



NEW



## Paddock Blue Race Track Chair

**Part No.** N24-JR010-E1-00

Strong, lightweight and easy to carry, the Paddock Blue Race Track Chair is an excellent companion for attending to race events and more with comfort on the go. A steel frame with seat in Racing Blue, this chair folds easily into its carry bag, with a carabiner keyring for attaching it to the chair. A perfect item for relaxing and watching your favourite Yamaha racing stars in action.

- Carry bag with carabiner keyring
- Yamaha Racing Blue and branding
- Made of a sturdy steel frame and 100% polyester
- Easy to fold and carry

## R1 Wooden Balance Bike Kids

**Part No.** N23-MP603-E2-00

Rev young hearts with the beautiful R1 balance bike for kids. Modelled on the iconic new Yamaha R1 Supersport bike, this wooden balance bike is the perfect learning tool for racers of the future. A silver exhaust detail and black swingarm capture the sporty look of the R1, with a stunning racing blue, white and black livery featuring Yamaha and R1 branding. A flat foam seat and rubber grips ensures comfort for the little ones' first ride.

- Wood construction
- Ages 2-4 years
- Racing blue frame
- White Yamaha Racing and R1 branding
- Rubber Supersport-style inflatable wheels



## BLU cRU Metal Balance Bike Kids

**Part No.** N23-EC603-B0-00

A must-have for aspiring riders, the bLU cRU metal balance bike for kids offers an ideal starting point to build confidence on two wheels. Inspired by Yamaha's bLU cRU racing programme, a lightweight metal frame combines with chunky rubber wheels for maximum control. A grab bar on the seat for carrying and extra support, and rubber grips ensure comfort for the rider. The racing blue frame, silver swingarm and front forks feature Yamaha Racing branding to capture the bLU cRU feel that revs young hearts.

- Racing blue frame
- Rubber inflatable wheels
- Height adjustable seat
- Metal construction
- Yamaha Racing branding
- Ages 2-4 years



### REVS Beach Sliders

**Part No.** N23-RV305-B9 **XX**

**SIZE:** 37-38-39-40-41-42-43-44-45

Enjoy the beach and the sun while showing your Yamaha passion with the REVS beach sliders. A footwear essential, these sliders are contemporary and shaped for maximum comfort with an EVA & PU mix. Raised edges and moulded toe imprints ensure a firm hold, with strong Yamaha branding in a simple and clean style.

- EVA (Ethylene-vinyl acetate) and PU (Polyurethane)
- Embossed white Yamaha branding



### REVS Tyre Keyring

**Part No.** N23-RV003-B7-00

Stylish and aligned with the contemporary new REVS Collection, the REVS tyre keyring is a cool accessory to keep handy at all times. A PVC strap resembles a tyre profile as its key feature, with red stripes running its length to highlight the design. White Yamaha branding identifies the REVS look, with a metal ring to carry keys and other essential items.

- 100% PVC
- Tyre profile design
- White Yamaha branding
- Black metal key chain







## REVS Brake Disc Wall Clock

**Part No.** N23-TB005-M0-00

Keep track of time and admire a stunning piece of décor with the REVS brake disc wall clock. Based on the original Yamaha R1 brake disc this clock is an instant classic, perfect for home, office or garage display. Made from lightweight aluminium, the black clock face and red spanner-styled hands form a wonderful contrast that demands attention. Small and light enough to comfortably hang, the REVS wall clock is an essential for Yamaha fans everywhere

- 320mm total diameter
- Black aluminium face and red hands
- 20mm total thickness
- White Yamaha branding on face

## Paddock Blue Toiletry Bag

**Part No.** N23-JB015-E8-00

Perfect for carrying toiletries and personal items during travelling, the Paddock Blue toiletry bag is both compact and convenient. The two zipped compartments offer plenty of space, while its white and racing blue body with Yamaha Racing logo give an instantly recognisable look and feel.

- Racing blue and white design
- Two zipped compartments
- Printed Yamaha Factory Racing logos
- Compact and versatile
- 100% polyester





## Paddock Blue Sports Towel

**Part No.** N23-JR001-E0-00

Lightweight and quick drying, the Paddock Blue sports towel is an essential for race events and exercise. This microfibre towel gives an incredibly soft feel, and packs away into the handy storage bag to easily take on a trip, to the race track or to the park or beach. The bold white Yamaha Racing design makes this into a real must-have for fans.

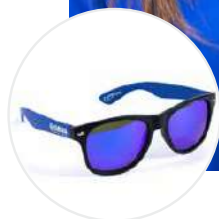
- 100% polyester
- 70x140cm
- Branded storage bag included
- Quick-dry and light microfibre
- Blue and white Yamaha Racing design

## Paddock Blue Sunglasses Adult

**Part No.** N23-JJ805-E1-00

A stylish eyewear piece for sunny days, the Paddock Blue sunglasses for adults are Yamaha Racing fashion at its best. The black polycarbonate frame ensures a lightweight but strong build, and tinted blue lenses with UV400 protection help protect the eyes. White Yamaha Racing logos on the contrast-coloured racing blue arms give a cool and sporty look, and a black carry pouch allows easy storage and portability.

- Black frame with contrast racing blue arms
- Soft black carry pouch
- Polycarbonate frame
- Lenses with UV400 protection
- White Yamaha Racing branding





## Paddock Blue Sunglasses Kids

**Part No.** N23-JJ605-E1-00

A cool blue eyewear for young ones, the Paddock Blue sunglasses make a real statement of Yamaha passion. A polycarbonate frame ensures a lightweight but strong build, and tinted blue lenses with UV400 protection help protect the eyes.

- Striking Yamaha Racing blue design
- Lenses with UV400 protection
- Soft black carry pouch
- Polycarbonate frame

## Paddock Blue Lanyard

**Part No.** N23-JL000-E0-00

Paddock Blue lanyard with a buckle that can be detached. Useful to hold your keys or badge

- Polyester webbing





## Paddock Blue Thermos Flask

**Part No.** N23-JD006-E0-00

With a 500ml capacity, the stainless-steel Paddock Blue thermos flask is a perfect travel accessory for road trips and race events. Keeping drinks warm and secure, this bold and essential item features a racing blue with classic white Yamaha Racing design

- 500ml capacity
- Stainless-steel, racing blue body
- Plastic screw top lid
- Thermos insulation retains hot or cold temperatures
- White Yamaha Racing logos

## Paddock Blue Backpack Kids Race

**Part No.** N23-MB612-E0-00

Perfect for school, holidays or sports, the Paddock Blue backpack for kids is a cool item to show their love for Yamaha Racing. Highly functional and convenient, the bag features multiple pockets, adjustable straps and a carry loop. A special R7 track visual on the front pocket gives real impact to the bag, while the white Yamaha branding on the front and strap complete the full Yamaha Racing look.

- 100% polyester
- Yamaha Racing blue
- Printed white Yamaha Racing logos
- Special Yamaha R7 visual
- Large central compartment with additional pockets
- Adjustable straps and carry loop
- Cool item for young racing fans





## Nothing but the Max Mug

**Part No.** N23-SD011-B0-00

Simply designed and super convenient for hot drinks, the TMAX coffee mug is ideal for use at home, work or coffee shops. Inspired by the new TMAX scooter that reshapes urban travel, this mug features a cool black body and removable lid, with a black silicone sleeve grip to protect the hands and make carrying easy. White Yamaha and 'Nothing but the Max' logos on the body and sleeve give an understated and striking identity.

- Polypropylene plastic
- White Yamaha and 'Nothing but the Max' branding
- Silicon grip sleeve
- Removable lid
- 350ml

## Ténéré 700 World Raid Thermos Flask

**Part No.** N23-TD006-D0-00

Made for adventure and exploration, the stainless-steel Ténéré thermos flask is a must-have for off-road trips. The 500ml capacity keeps drinks warm and secure for long trips, with a carry loop on the lid giving extra ease of use. A nice metallic brown finish with racing blue accents and white Ténéré graphics give this flask a true adventurer's look.

- Plastic screw top lid
- Printed racing blue and white Yamaha and Ténéré branding
- 500ml volume
- Stainless-steel, metallic brown body





## Ténéré 700 World Raid Bath Bag

**Part No.** N23-TB015-D0-00

Compact, lightweight and ideal for desert adventures, the Ténéré 700 World Raid bath bag has ample room for carrying toiletries and personal items. This bath bag is easy to carry, super convenient and its design follows the full Ténéré 700 World Raid collection. Presented in a light brown shade with racing blue and white branding, it features a handy integrated hanger and internal compartments to store all necessities. An essential for the true explorer.

- Printed racing blue and white Yamaha and Ténéré branding
- Water resistant coating
- Carry handles
- 100% polyester
- Light brown exterior matching Ténéré World Raid apparel
- Integrated hanger
- Central compartment with inner zip compartment

## Paddock Blue Boxer Set Men

**Part No.** B22-UU100-E1 **XX**

**SIZE:** 0S-0M-0L-1L-2L

Comfortable, cotton-stretch boxers for men in Yamaha Racing style. Comes as a set containing one blue and one black colored boxer.

- Blue boxer features Yamaha logo on leg
- 95% cotton, 5% elastin mix
- Mid-rise boxers with a shorter leg and wide, elastic waistband
- Giftbox with 2 items
- Pleasantly soft and comfortable
- Black colored waistband on both colors





## Yamaha Racing Beach Sliders

**Part No.** N22-JF305-E8 **XX**

**SIZE:** 37-38-39-40-41-42-43-44-45

From beach to track, you will stand out with this set of special Yamaha Racing beach sliders.

- High quality beach sliders
- EVA (Ethylene-vinyl acetate) and PU (Polyurethane)
- Features embossed logo
- Yamaha Racing blue colour



## BMX bLU cRU Metal Balance Bike Kids.

**Part No.** N22-MP603-B4-00

Give kids a taste of two-wheeled thrills with the BMX metal balance bike for kids. Taking inspiration from the Yamaha bLU cRU rider teams, youngsters can now perfect their bike control and balance on this lightweight metal balance bike. The rubber BMX-style wheels are combined with a Yamaha Racing blue frame and number plate carrying the bLU CRU logo to complete the special race look. A padded seat and rubber grips provide plenty of comfort and control while riding.

- White Yamaha Racing and R1 branding
- Rubber BMX-style inflatable wheels
- Height adjustable seat
- Metal construction
- Ages 2-4 years
- Racing blue frame



## BLU cRU Metal Balance Bike Kids

Part No. N22-MP603-E1-RA

Good metal balance bike for little kids aligned to blucru riders team.

- Kids metal balance bike
- Yamaha Racing BlucRu branding
- Inspired by BluCru Riders team
- Great for the small ones
- Big tyres
- Color blue



## Yamaha Portable Flashlight

Part No. N22-NT001-B0-00

Smart portable LED light to take with you on your road trip.

- Magnetic bottom to keep your hands free
- LED light white and red
- Extendable top light





## Paddock Blue Plush Toy

**Part No.** N22-MP607-E2-00

A cute and cuddly item inspired by Yamaha Racing team riders, the Paddock Blue plush toy makes a great gift for toddlers. A super soft finish means even the youngest can enjoy playing with it, and the standout racing blue and white design captures the Yamaha spirit. A perfect start to the Yamaha journey.

- Fun Yamaha Racing soft toy
- Great to play with for the young ones
- Custom design character
- Ages 1 year up
- Custom designed Yamaha Racing
- 100% polyester
- Yamaha Racing blue and white design
- Fun toy for little racing fans
- Soft feel plush

## Yamaha Racing Piggy Bank

**Part No.** N22-MB007-E8-00

Start saving at young age and dream about your future Yamaha with this Yamaha Racing piggy bank.

- Easy to see your saved money
- Custom design Yamaha
- Made of acrylic





## Yamaha Racing Laptop Sleeve

**Part No.** N22-JE001-E2-00

Carry your laptop in true Yamaha style with our premium quality 13" neoprene laptop sleeve. Black and Racing Blue design with white logos.

- 13" capacity
- Helps protect your laptop
- Lightweight neoprene

## Yamaha R1 Ceramic Mug

**Part No.** N22-JD000-E2-00

Part of the Iconic mugs collection, this version offers the R1 design. Enjoy your coffee or cup of tea in true Yamaha style.

- 100% ceramic
- Custom design R1





## Yamaha R1 Keyring

**Part No.** N22-JK003-E0-00

Part of our keyring collection, this keyring is designed to match our Yamaha R1.

- PVC with black metal keyring and chain
- Custom design R1

## YZ450F Ceramic Mug

**Part No.** N22-JD000-B1-00

Part of the Iconic mugs collection, this version offers the YZ450F Ceramic Mug. Enjoy your coffee or cup of tea in true Yamaha style.

- Design based on the iconic Yamaha YZ450F
- 100% ceramic



## Yamaha TMAX Ceramic Mug

**Part No.** N22-SD000-B4-00

Part of the Iconic mugs collection, this version offers the TMAX design. Enjoy your coffee or cup of tea in true Yamaha style.

- 100% ceramic
- Custom design TMAX



## Yamaha Hyper Naked MT-09 ceramic Mug

**Part No.** N22-ED000-W5-00

Part of the Iconic mugs collection, this version offers the MT-09 design. Enjoy your coffee or cup of tea in true Yamaha style.

- Custom design MT-09
- 100% ceramic







## Yamaha Ténéré 700 Rally Ceramic Mug

**Part No.** N22-TD000-C1-00

Part of the Iconic mugs collection, this version offers the Ténéré 700 Rally design. Enjoy your coffee or cup of tea in true Yamaha style.

- Custom design Tenere 700 Rally

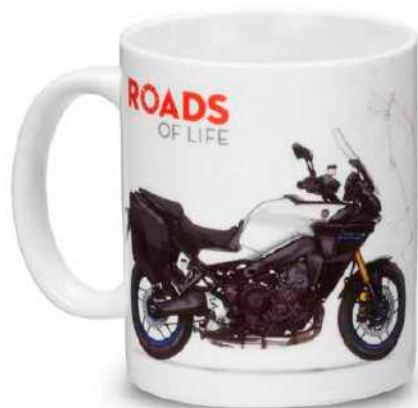
## Yamaha XSR900 Ceramic Mug

**Part No.** N22-PK003-B4-00

Part of the Iconic mugs collection, this version offers the XSR900 design. Enjoy your coffee or cup of tea in true Yamaha style.

- 100% ceramic
- Custom design XSR900





### Yamaha Tracer 9 GT Ceramic Mug

**Part No.** N22-ND000-C1-00

Part of the Iconic mugs collection, this version offers the Tracer 9GT design. Enjoy your coffee or cup of tea in true Yamaha style.

- Custom design Tracer 9 GT
- 100% ceramic

### Yamaha Tracer 9 GT Keyring

**Part No.** N22-NK000-B7-00

Part of our keyring collection, this keyring is designed to match our Tracer 9 GT Sport Touring motorcycle.

- PVC with black metal keyring and chain
- Custom design Tracer 9 GT



## Yamaha TMAX Keyring

**Part No.** N22-SK003-B9-00

Part of our keyring collection, this keyring is designed to match our TMAX, including the 'Nothing But The Max' logo.

- Nothing But The MAX logo
- PVC with black metal keyring and chain



## Keyring Yamaha Grizzly

**Part No.** N22-RL003-B1-00

Part of our keyring collection, this keyring is designed to match our Grizzly all terrain vehicle.

- PVC with black metal keyring and chain
- Custom design 2D Grizzly logo





### Game Chair Yamaha Racing - Sparco

**Part No.** N21-JB005-E1-00

High quality game chair in Yamaha Racing and Sparco design. Great to use at home or in the paddock at the race track.

- Height adjustable seat and arm rests
- Extra high back rest with tilt mechanism
- Ultimate paddock and game chair
- Black and blue PU leather
- Car seat-like game chair in Yamaha Racing and Sparco design

### Yamaha Racing Umbrella

**Part No.** N21-JR000-B4-00

Large Yamaha Racing umbrella, branded on both sides. Great to use on rainy days or on the grid, so you always look good and stay dry!

- Large umbrella
- Soft foam handgrip
- Comes with pouch
- Combines perfectly with the other items in the collection
- Yamaha Racing branded, inside and outside





## Yamaha Racing Classic Mug

**Part No.** N21-JD000-B4-00

Enjoy your tea or coffee with this ceramic mug, in classic Yamaha Racing look.

- Yamaha Racing classic design
- Dishwasher and microwave safe
- 300 ml
- Material: Ceramic



## XMAX keyring

**Part No.** N21-SK009-B1-00

Must have for your XMAX keys

- Black metal and PVC



## **Paddock Blue Key Ring**

**Part No.** N20-JK003-E2-00

Rubber key ring from Paddock Blue Collection.

- For Yamaha Racing fans
- Featuring Yamaha Racing speedblock design
- Rubber key ring with metal ring



## **Yamaha Floating Phone Case**

**Part No.** N21-GC008-B4-00

No more stress about your phone sinking to the bottom of the ocean. The Yamaha floating PVC phone case keeps your phone dry and safe, while you enjoy yourself at boating or other sports activities on and off the water.

- Yamaha branded
- Universal size: 11 x 21 cm
- Transparent PVC phone case
- Includes extra band to carry case on arm
- Waterproof and floating
- Lanyard keeps your hands free on the boat







www.yamaha-motor.eu

follow us on:



Yamaha Motor Europe N.V.

Koolhovenlaan 101  
1119 NC Schiphol-Rijk

P.O.Box 75033  
1117 ZN Schiphol  
The Netherlands

Tel: + 31 20 654 6000

YAMAHA MOTOR  
**YOU EXPERIENCE**

YAMAHA MOTOR  
**YOU SERVICES**

Dealer

**Disclaimer**  
Always wear a helmet, eye protection and protective clothing when riding any type of powered vehicle. Yamaha encourages you to ride safely and respect fellow riders and the environment. All information in this brochure/catalogue is given for general guidance. Specifications, prices and/ or appearance of Yamaha products and non Yamaha branded products are subject to change without prior notice. Non Yamaha branded products as depicted in this brochure/catalogue are fully developed and produced by respected third parties. Yamaha does not guarantee the availability of the displayed products in local markets. The product range may be limited in some countries and Yamaha has the right to discontinue products without prior notice. Where applicable, prices of Yamaha products may vary according to local requirements and conditions. No rights can be obtained from this information. Sizes of the apparel displayed are indicative – Yamaha recommends you to visit your local Yamaha dealer for the best fit. For further details and availability, please contact your local Yamaha dealer.

